

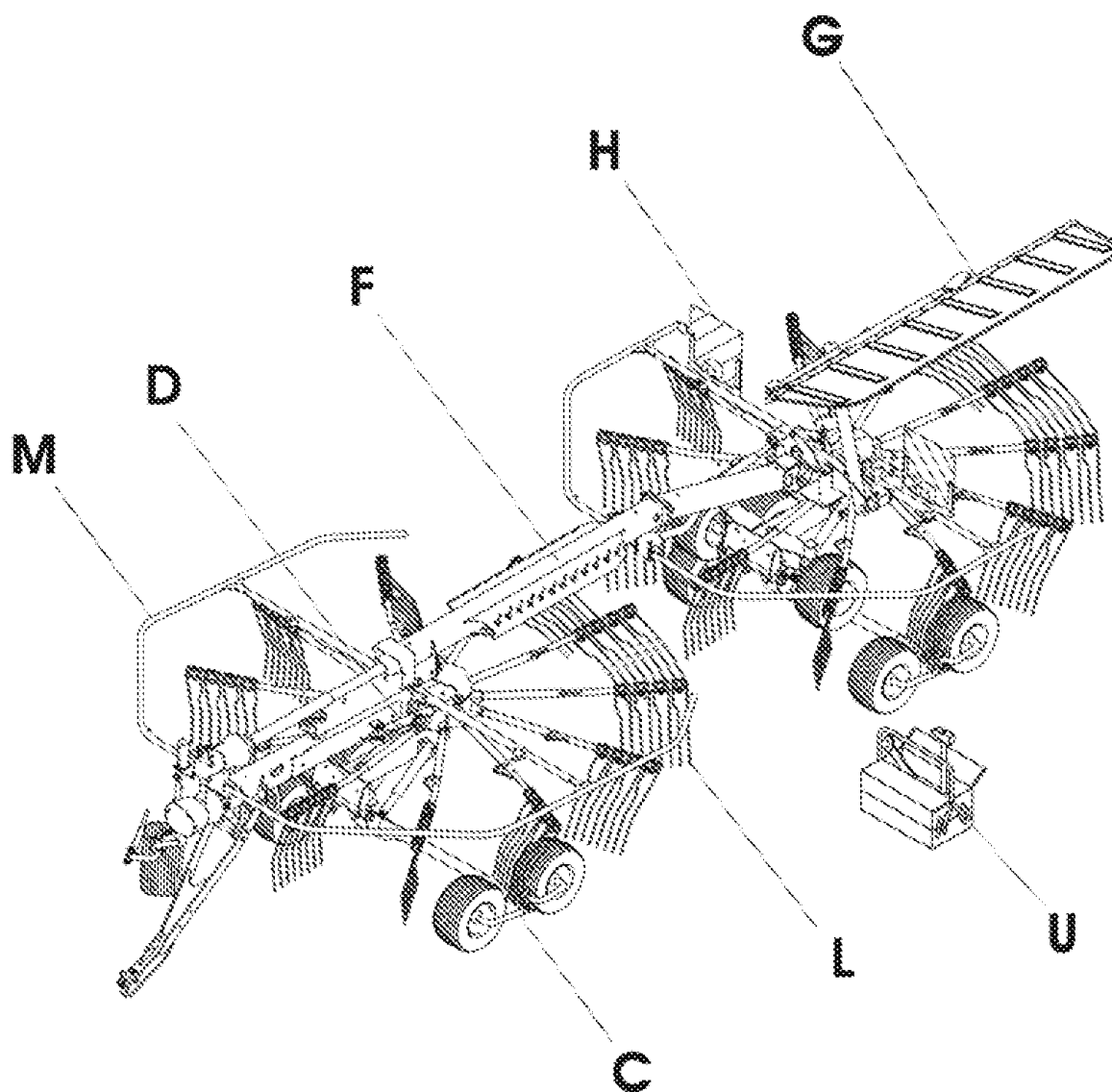
ANDEX 713 T EVO

Spare Parts Manual

Article number:	VF16643691
Language:	EN
Production year (from):	2006
Prod. Series nr (from):	6962
5000 < Mach. ID <=	

ANDEX 713 T EVO / Table of Contents

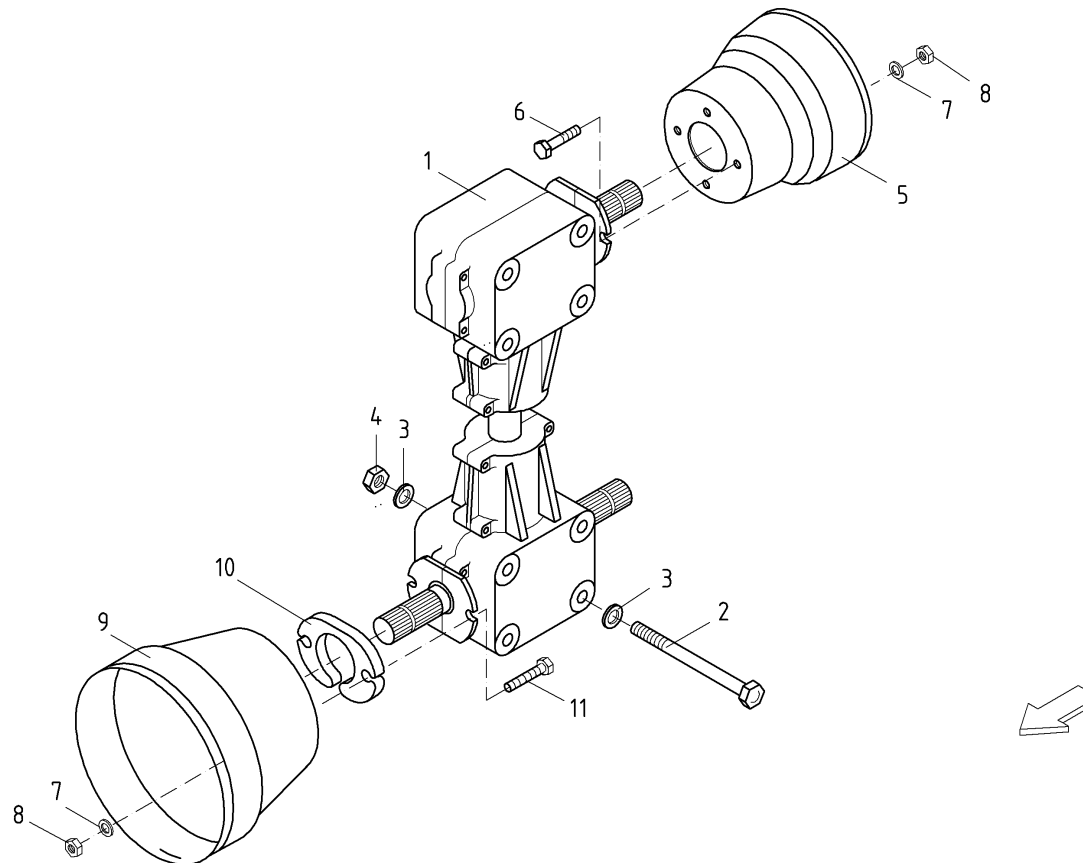
PosNo.	Assembly group	Page
B	ANGLE DRIVE	1
B	ANGLE DRIVE	2
B	ROTARY HUB WITH GEAR BOX	3
B	UNIVERSAL PROP.SHAFT WITH FREE WHEEL	4
B	UNIVERSAL PROP.SHAFT WITH FREE WHEEL	5
B	UNIVERSAL PROP.SHAFT WALTERSCHEID	6
B	UNIVERSAL PROP.SHAFT WALTERSCHEID	7
B	UNIV.PROP.SHAFT SAFETY CLUTCH WALTERSCHEID	8
B	JOINT SHAFT NO PROTECTING TUBE WALTERSCHEID	9
B	SAFETY CLUTCH WALTERSCHEID	10
B	SAFETY CLUTCH WALTERSCHEID	11
B	DOUBLE-JOINT WALTERSCHEID	12
B	FREEWHEELD WALTERSCHEID	13
C	FRAME	14
C	TYRES 18 X 8,5 - 8	15
C	TANDEM AXLE	16
C	LAND WHEEL	17
C	SUPPORT FEED	18
D	HYDRAULIC DEVICE	19
F	DRAWBAR	20
F	DRAWBAR IN FRONT	21
F	FRAME CENTRIC	22
F	FRAME BACK	23
F	COUPLING DEVICE	24
F	SUPPORT ADJUSTABLE	25
G	SWATH SHEET	26
G	SWATH SHEET	27
G	SWATH SHEET	28
H	LIGTHING	29
L	SUPPORT	30
M	PROTECTION DEVICE (-5466)	31
M	PROTECTION DEVICE (5467)	32
U	PAINT LABEL	33



ANDEX 713 T EVO / angle drive



B01



1.002745.03

SW-SGET

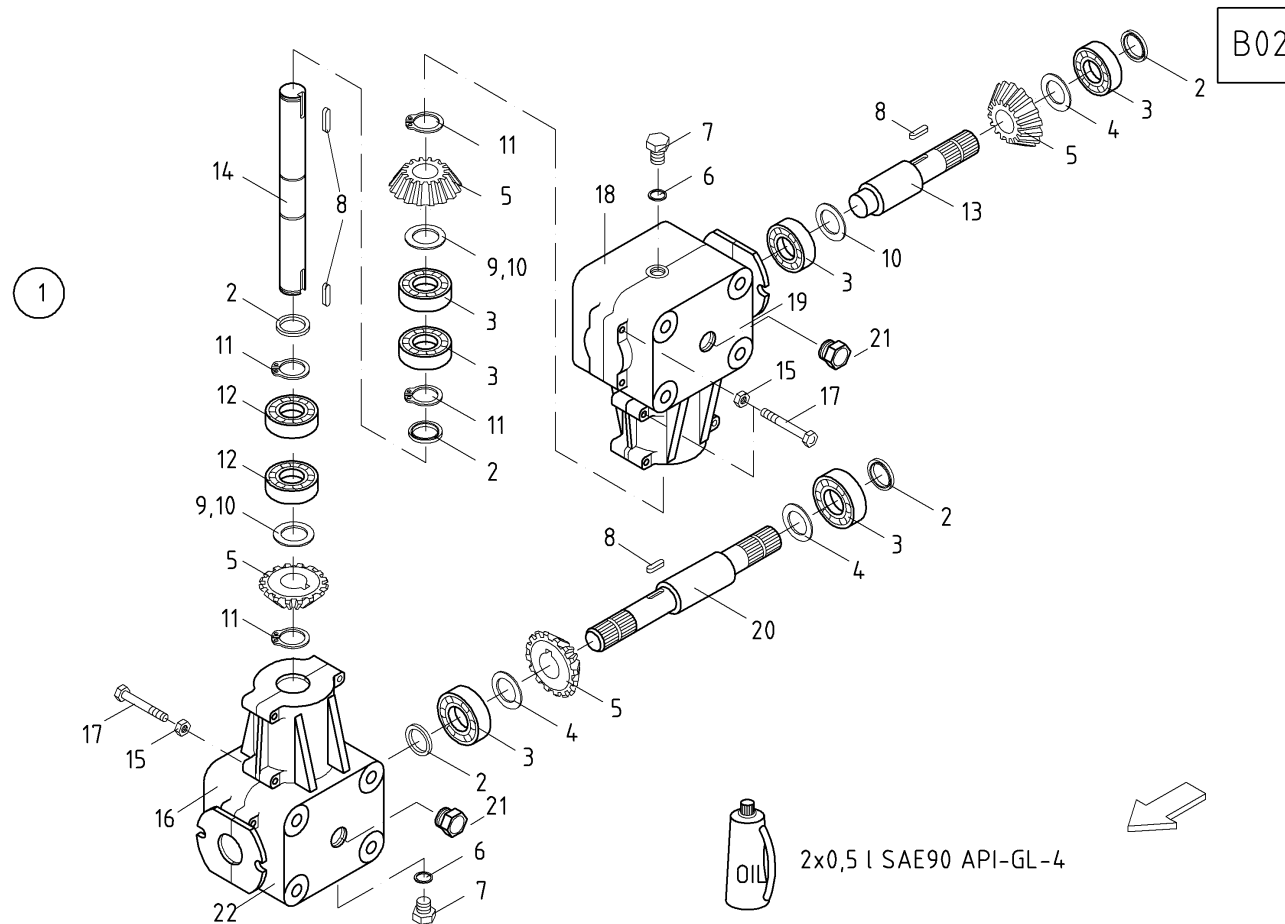
100274503B01

ANDEX 713 T EVO / angle drive



PosNo.	Part No.	Qty.	Description	Remark
1	VF16609371	1	ANGLE DRIVE	
2	VF06209193	5	HEX.HEAD SCREW	
3	KG01267461	10	WASHER M10	
4	KG01067661	5	LOCK NUT M10 8	
5	VF16608975	1	BELLOWS	
6	KG00469161	2	HEX. SCREW M6X25 8.8	
7	VGND3034V	8	WASHER, PLAIN	
8	KG01067361	4	LOCK NUT M6 8	
9	VF16623698	1	PROTECTING CUP	
9	VF06579315	1	PROTECTING CUP	für/for B B05
10	VF16624378.86	1	O-SEAL	
11	KG00469461	2	HEX. SCREW M6X40 8.8	

ANDEX 713 T EVO / angle drive



1.002799.02

SW-SGET1

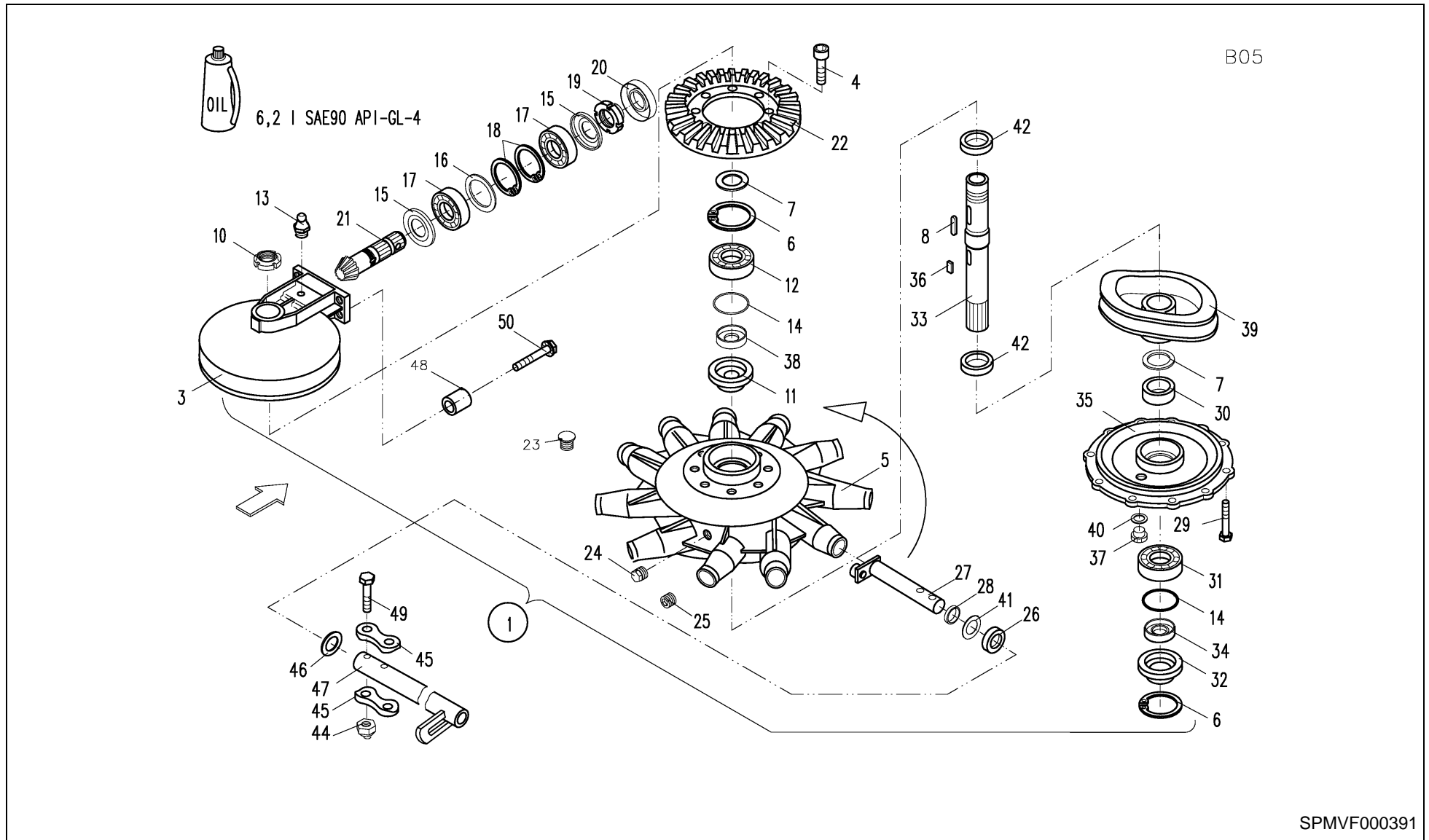
100279902B02



ANDEX 713 T EVO / angle drive

PosNo.	Part No.	Qty.	Description	Remark
1	VF16609371	1	ANGLE DRIVE	
2	KG00043800	5	RADIAL SHAFT SEAL - A 35X52X7	
3	KG01381900	6	BALL BEARING 6207	
4	VF16620979	3	WASHER/DISC/PLATE	
5	VF16620980	4	BEVEL GEAR	
6	VF16620981	2	O-RING	
7	VF16620982	2	OIL DRAIN PLUG	
8	KG01308500	4	KEY 10X8X25	
9	VF01137725	2	SPACER	
10	VF06214485	5	SPACER	
11	VF16620984	4	CIRCLIP	
12	KG01381100	2	BALL BEARING 6207-2RS	
13	VF16620985	1	SHAFT	
14	VF16620986	1	SHAFT	
15	KG01051961	16	HEX. NUT M8 8	
16	VF16620987	1	GEAR HOUSING	
17	KG00353561	16	HEX. BOLT M8X55 8.8	
18	VF16620988	1	GEAR HOUSING	
19	VF16624906	1	GEAR HOUSING	
20	VF16622928	1	SHAFT	
21	VF16624908	2	SIGHT GLASS	
22	VF16624907	1	GEAR HOUSING	

ANDEX 713 T EVO / rotary hub with gear box



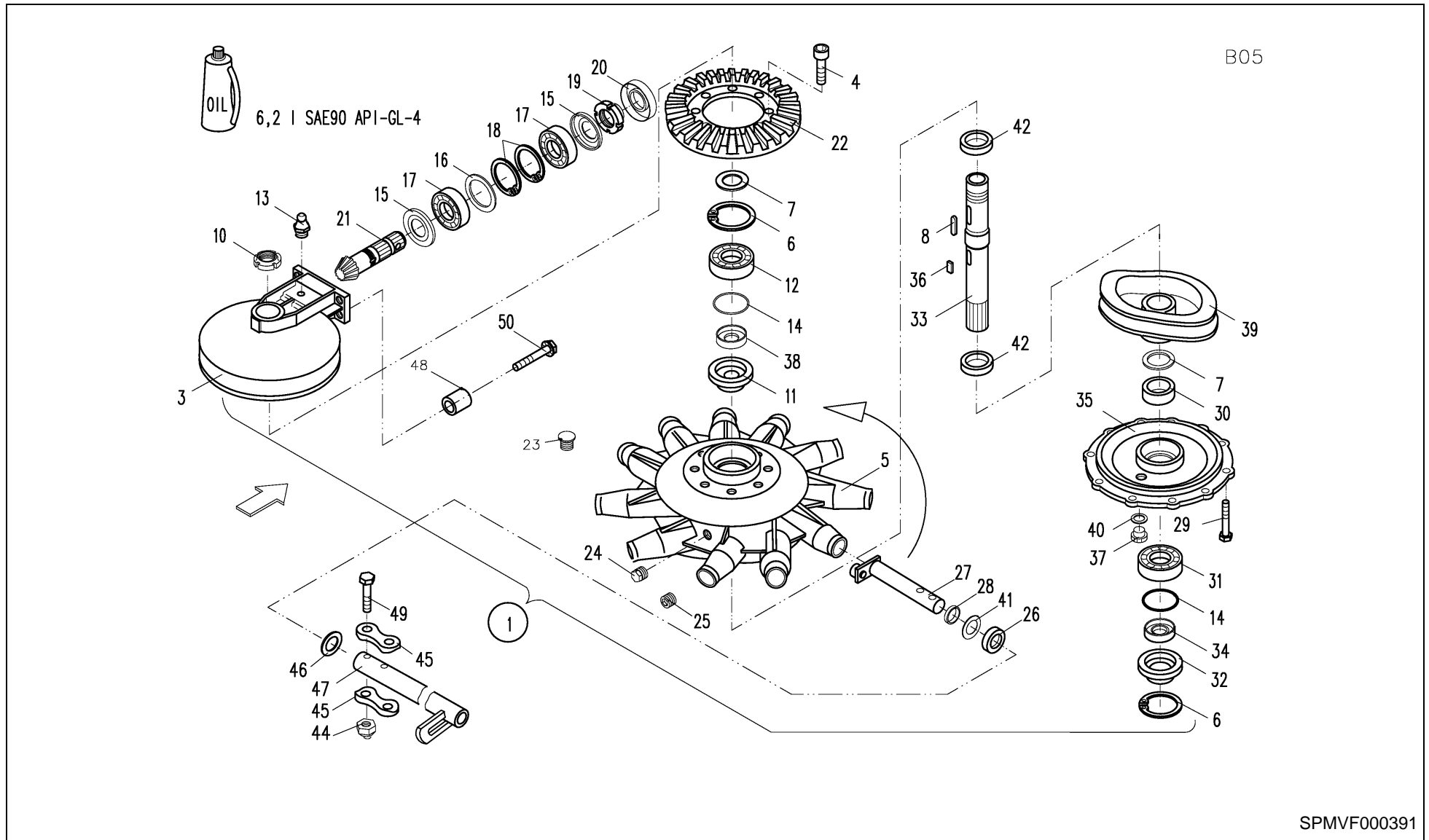
SPMVF000391



ANDEX 713 T EVO / rotary hub with gear box

PosNo.	Part No.	Qty.	Description	Remark
1	VF16644354.94	2	GEAR BOX 11 ARM	
3	VF16608482.94	2	GEARBOX COVER	
4	VF16620953	16	SOCKET HEAD CP SCREW	
5	VF16608484.94	2	GEAR HOUSING	
6	KG01132300	4	CIRCLIP-B 110 X 4	
7	VF16620948		WASHER	
8	VF16643541	2	KEY 8X12X29	
10	VF16604951	2	GROOVED NUT	
11	VF16622915	2	CAP	
12	KG01403800	2	BALL BEARING 6310-Z	
13	VF01120698	4	GREASE NIPPLE	
14	VF16608485	4	O-RING	
15	VF16620949	4	RING	
16	VF16620950	1	WASHER	
17	KG01799800	4	TAPER ROLLER BEARING 30208	
18	KG01130900	4	CIRCLIP-B 80 X 2.5	
19	VF01120606	2	GROOVED NUT	
20	VF16604277	2	SEAL RING	
21	VF16608483	2	PINION SHAFT	
22	VF16608481	2	CROWN WHEEL	
23	VF16622916	2	OIL DRAIN PLUG	
24	VF16622917	2	OIL DRAIN PLUG	
25	VF16622918	2	OIL DRAIN PLUG	
26	KG00043700	22	RADIAL SHAFT SEAL - A 35X45X7	
27	VF16624966	22	CONNECTING ROD	
28	VF16620952	22	SPACER WASHER	
29	VF01177466	22	HEX.BOLT	
30	VF16622933	2	SPACING TUBE	
31	KG01404000	2	BALL BEARING 6310	
32	VF16608486	2	CAP	
33	VF16642476	2	KREISELACHSE HOCHFEST FA. COMER	
34	KG00161100	2	RADIAL SHAFT SEAL - AS 50X72X8	
35	VF16624961.94	2	COVER	
36	VF06212529	2	FITTING KEY	
37	VF16622920	2	OIL DRAIN PLUG	
38	VF16620954	2	SEAL RING	
39	VF16624765	2	CAM DISK	
40	VF16620944	2	SEAL RING	
41	VF16608480	22	SHIM	
42	VF16622921	4	SPACER	

ANDEX 713 T EVO / rotary hub with gear box

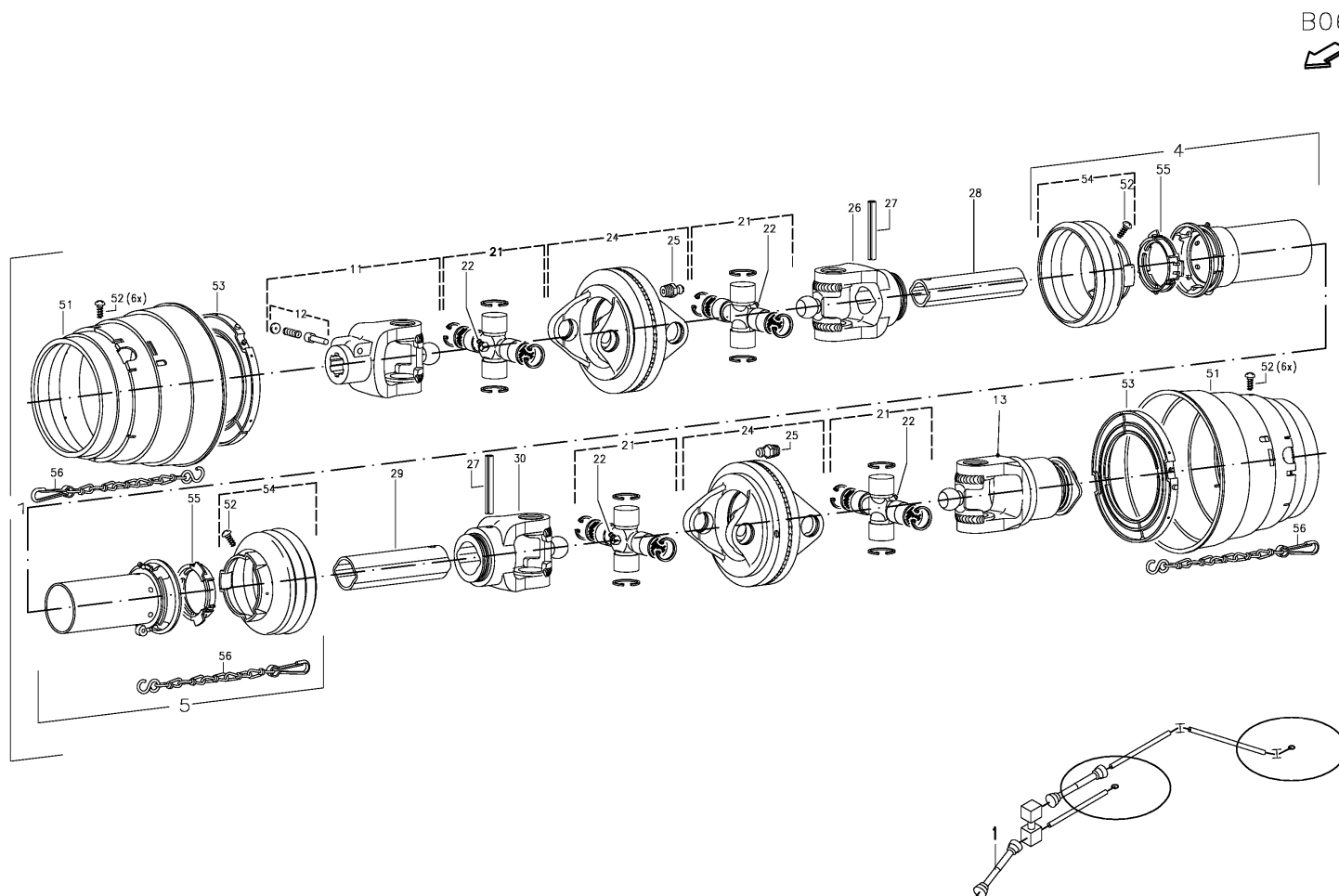


ANDEX 713 T EVO / rotary hub with gear box



PosNo.	Part No.	Qty.	Description	Remark
44	KG01068961	44	LOCK NUT M12 10	
45	VF16624895	44	SHIM	
46	VF16607120	44	WASHER	
47	VF16624795.86	1	BEARING TUBE	
48	VF16609753	1	SPACER TUBE	
49	VF01111524	44	HEX. HEAD SCREW	
50	VF16621125	8	HEX. HEAD SCREW	

ANDEX 713 T EVO / universal prop.shaft with free wheel



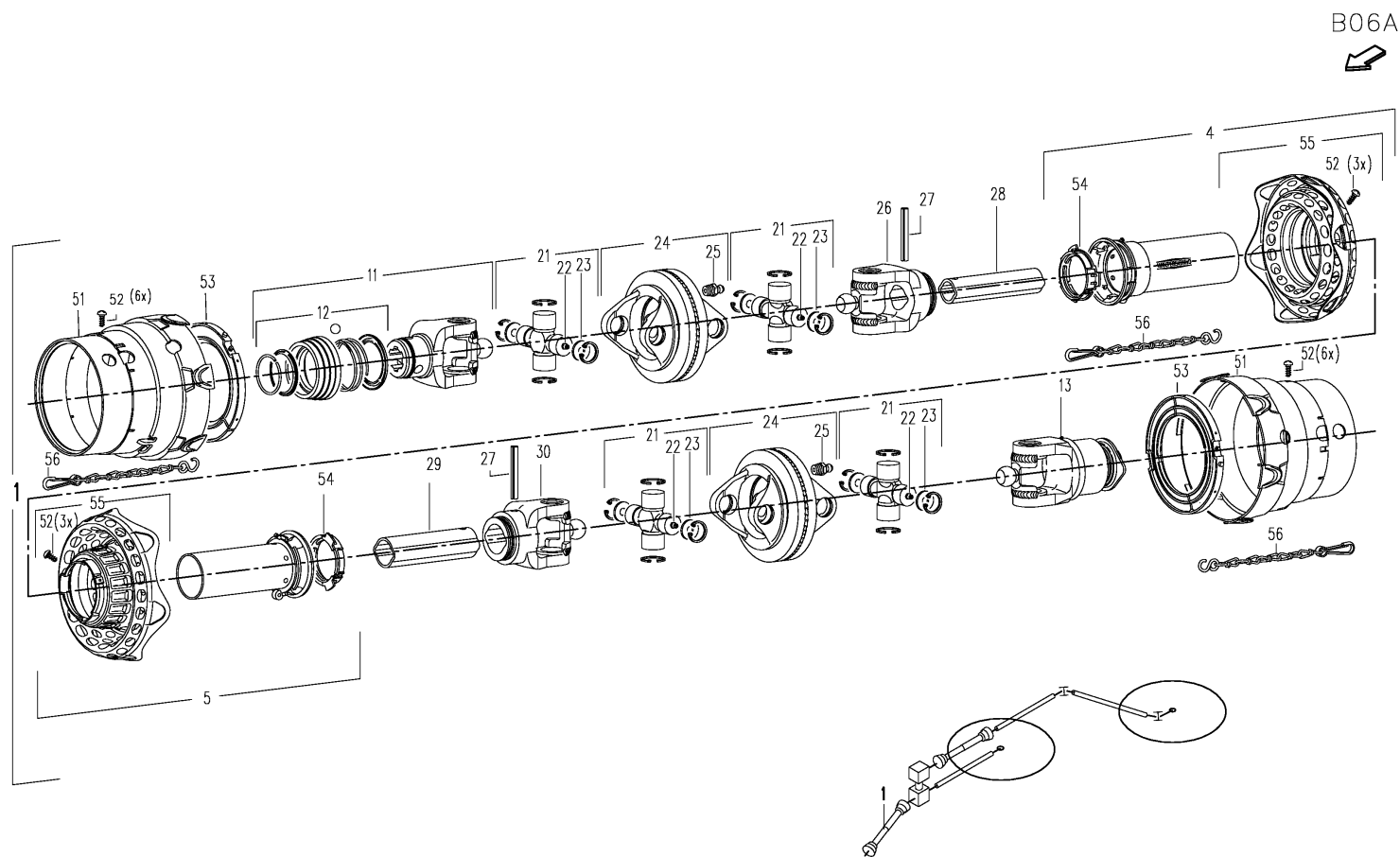
SPMVF000389



ANDEX 713 T EVO / universal prop.shaft with free wheel

PosNo.	Part No.	Qty.	Description	Remark
1	VF16641551	1	UNIV.PROP.SH. LZ=910	
4	VF16620955	1	OUTER PROTECT.TUBE	
5	VF16508681	1	PROTECTION HALF	
11	VF16508682	1	JOINT FORK	
12	VF06581550	1	PIN	
13	VF16624986	1	FREEWHEELD	B B15
21	VF16508684	4	JOINT CROSS	
22	VG63.27.00	4	GREASE NIPPLE	
24	VF16508685	2	HINGE PIECE	
25	VGND9813V	2	GREASE NIPPLE	
26	VF16620956	1	FORK	
27	VG61.05.04	2	PIN, TENSION	
28	VF16620957	1	PROFILED CONNECTION	
29	VF16620958	1	PROFILED CONNECTION	
30	VF16508683	1	FORK	
51	VF16508688	2	GUARD	
52	KG00743163	14	TAPPING SCREW 4.2X9.5 4.8	
53	VF16508687	2	SLIDING RING	
54	VF16508686	2	GUARD	
55	VF16504075	2	RING	
56	VG82.36.08	3	KETTING, BORG- L=600	

ANDEX 713 T EVO / universal prop.shaft with free wheel



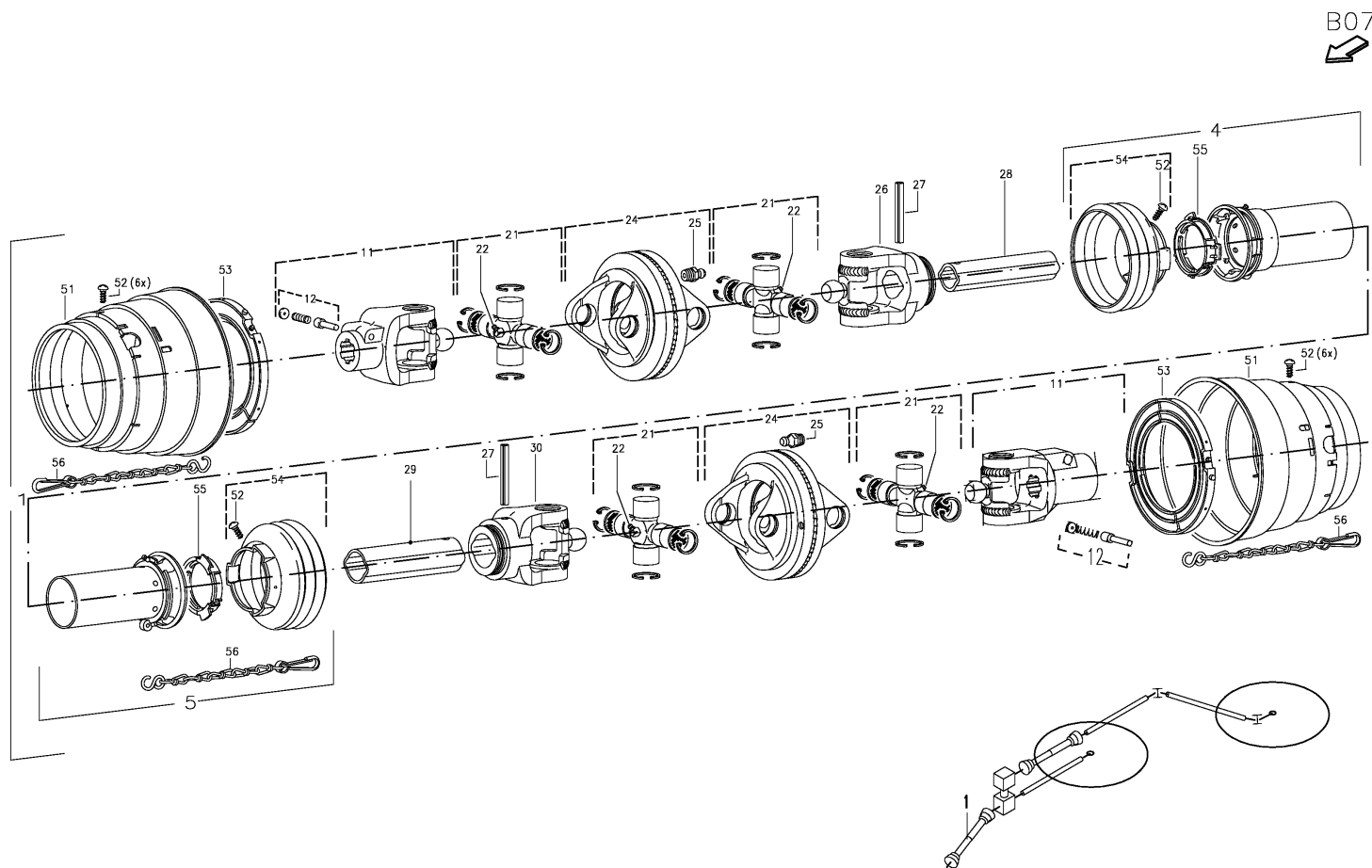
SPMVF000390



ANDEX 713 T EVO / universal prop.shaft with free wheel

PosNo.	Part No.	Qty.	Description	Remark
1	VF16641551	1	UNIV.PROP.SH. LZ=910	
4	VF16625112	1	PROTECTION HALF	
5	VF16625113	1	PROTECTION HALF	
11	VF16625115	1	FORK	
12	VF16625102	1	LOCK	
13	VF16624986	1	FREEWHEELD	B B15
21	VF16625108	4	JOINT CROSS	
22	VF01120692	4	GREASE NIPPLE	
23	VF16625111	8	PLATE 21,95 X2	
24	VF16508685	2	HINGE PIECE	
25	VGND9813V	2	GREASE NIPPLE	
26	VF16620956	1	FORK	
27	VG61.05.04	2	PIN, TENSION	
28	VF16620957	1	PROFILED CONNECTION	
29	VF16620958	1	PROFILED CONNECTION	
30	VF16508683	1	FORK	
51	VF16625110	2	GUARD	
52	KG00743163	18	TAPPING SCREW 4.2X9.5 4.8	
53	VF16508687	2	SLIDING RING	
54	VF16504075	2	RING	
55	VF16625109	2	GUARD	
56	VG82.36.08	3	KETTING, BORG- L=600	

ANDEX 713 T EVO / universal prop.shaft Walterscheid



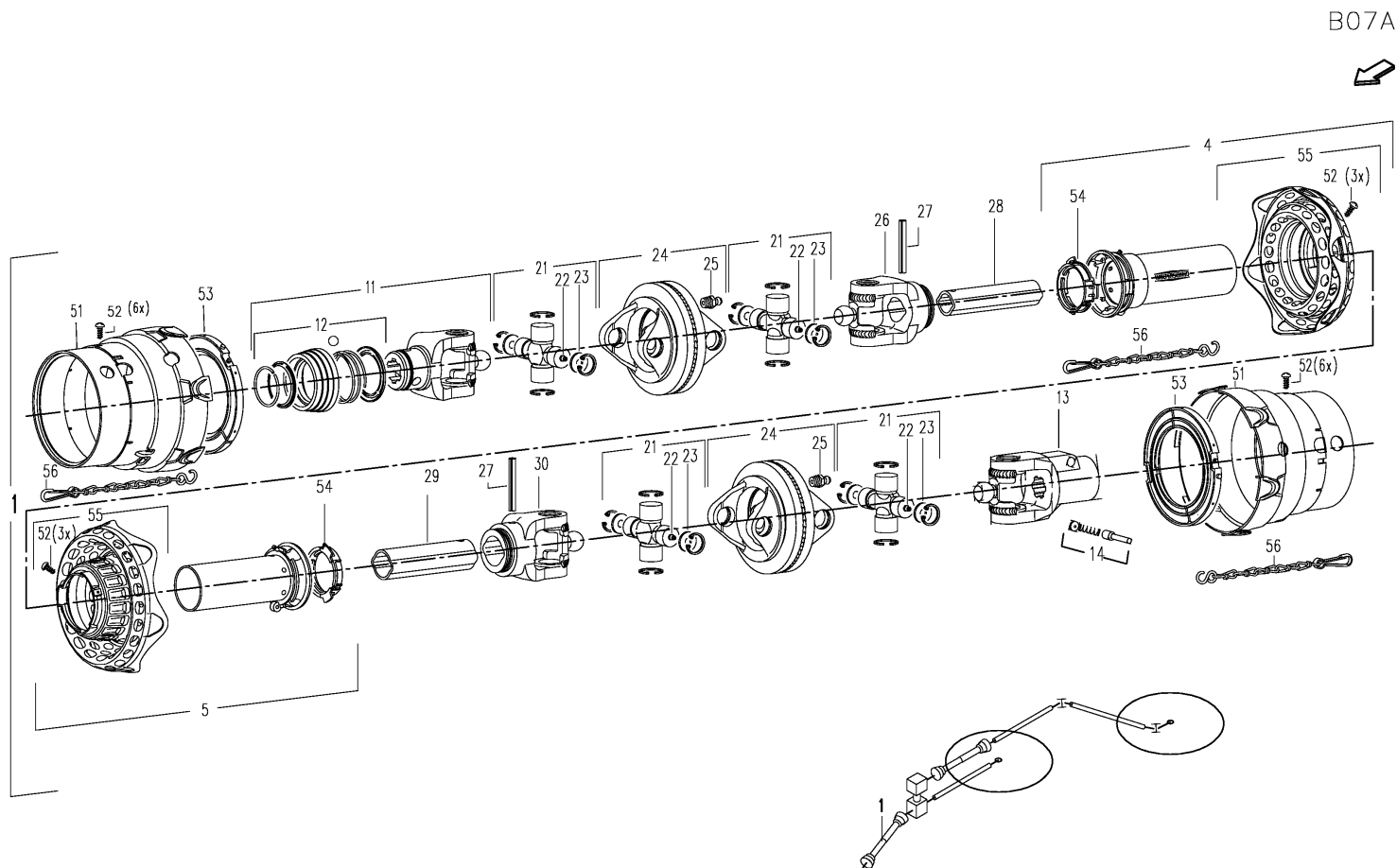
SPMVF000392

ANDEX 713 T EVO / universal prop.shaft Walterscheid



PosNo.	Part No.	Qty.	Description	Remark
1	VF16609876	1	CARDAN	
4	VF16620955	1	OUTER PROTECT.TUBE	
5	VF16508681	1	PROTECTION HALF	
11	VF16508682	2	JOINT FORK	
12	VF06581550	2	PIN	
21	VF16508684	4	JOINT CROSS	
22	VG63.27.00	4	GREASE NIPPLE	
24	VF16508685	2	HINGE PIECE	
25	VGND9813V	2	GREASE NIPPLE	
26	VF16620956	1	FORK	
27	VG61.05.04	2	PIN, TENSION	
28	VF16620957	1	PROFILED CONNECTION	
29	VF16620958	1	PROFILED CONNECTION	
30	VF16508683	1	FORK	
51	VF16508688	2	GUARD	
52	KG00743163	14	TAPPING SCREW 4.2X9.5 4.8	
53	VF16508687	2	SLIDING RING	
54	VF16508686	2	GUARD	
55	VF16504075	2	RING	
56	VG82.36.08	3	KETTING, BORG- L=600	

ANDEX 713 T EVO / universal prop.shaft Walterscheid



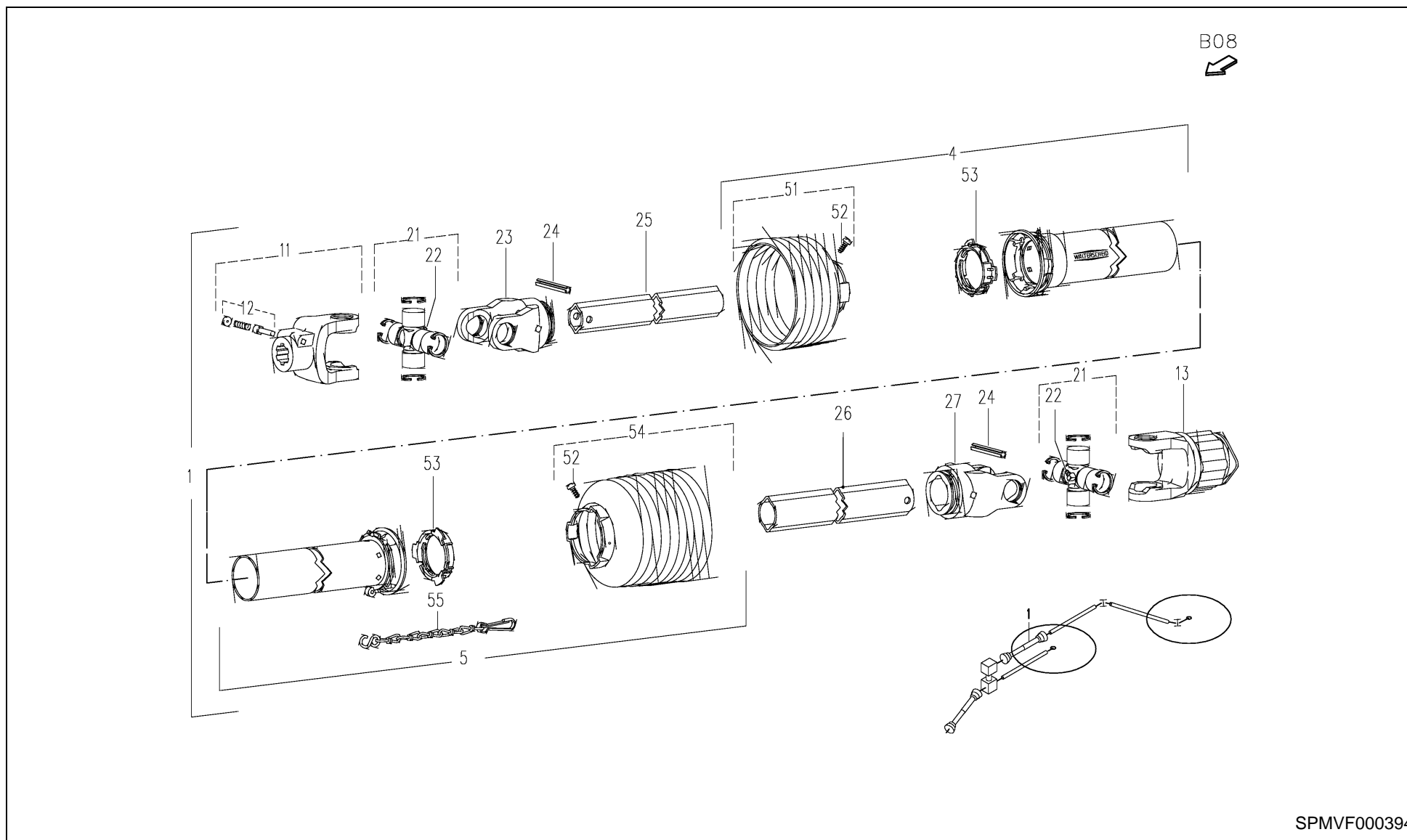
SPMVF000393

ANDEX 713 T EVO / universal prop.shaft Walterscheid



PosNo.	Part No.	Qty.	Description	Remark
1	VF16609876	1	CARDAN	
4	VF16620955	1	OUTER PROTECT.TUBE	
5	VF16508681	1	PROTECTION HALF	
11	VF16625115	1	FORK	
12	VF16625102	1	LOCK	
13	VF16508682	2	JOINT FORK	
14	VF06581550	2	PIN	
21	VF16625108	4	JOINT CROSS	
22	VF01120692	4	GREASE NIPPLE	
23	VF16625111	8	PLATE 21,95 X2	
24	VF16508685	2	HINGE PIECE	
25	VGND9813V	2	GREASE NIPPLE	
26	VF16620956	1	FORK	
27	VG61.05.04	2	PIN, TENSION	
28	VF16620957	1	PROFILED CONNECTION	
29	VF16620958	1	PROFILED CONNECTION	
30	VF16508683	1	FORK	
51	VF16625110	2	GUARD	
52	KG00743163	18	TAPPING SCREW 4.2X9.5 4.8	
53	VF16508687	2	SLIDING RING	
54	VF16504075	2	RING	
55	VF16625109	2	GUARD	
56	VG82.36.08	2	KETTING, BORG- L=600	

ANDEX 713 T EVO / UNIV.PROP.SHAFT safety clutch Walterscheid



ANDEX 713 T EVO / UNIV.PROP.SHAFT safety clutch Walterscheid

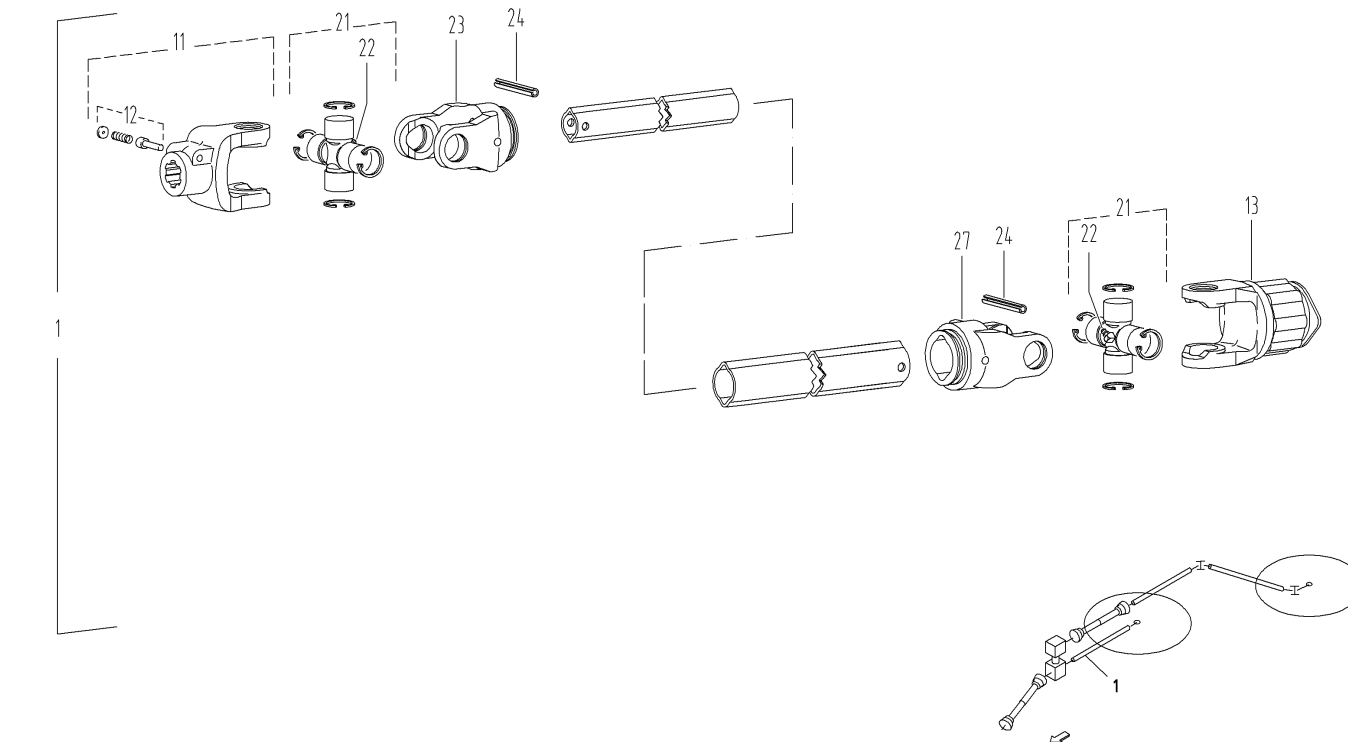


PosNo.	Part No.	Qty.	Description	Remark
1	VF16609271	1	JOINT SHAFT	
4	VF16504060	1	PROTECT HOOD	
5	VF06586643	1	PROTECTION HALF	
11	VF16504063	1	YOKE	
12	VF06581550	1	PIN	
13	VF16643796	1	STAR RATCH K32B	B B11
21	VF16504064	2	JOINT CROSS	
22	VG63.27.00	2	GREASE NIPPLE	
23	VF06580408	1	UNIVERSAL JOINT FORK	
24	VG61.05.04	2	PIN, TENSION	
25	VF06582433	1	PROFILED TUBE	
26	VF06582434	1	PROFILED TUBE	
27	VF16504073	1	YOKE	
51	VF16504076	1	PROTECT CUP	
52	KG00743163	2	TAPPING SCREW 4.2X9.5 4.8	
53	VF16504075	2	RING	
54	VF16609629	1	GUARD	
55	VG82.36.03	1	CHAIN, SAFETY	

ANDEX 713 T EVO / joint shaft no protecting tube Walterscheid



B09



1.002770.00

SW-GEL20

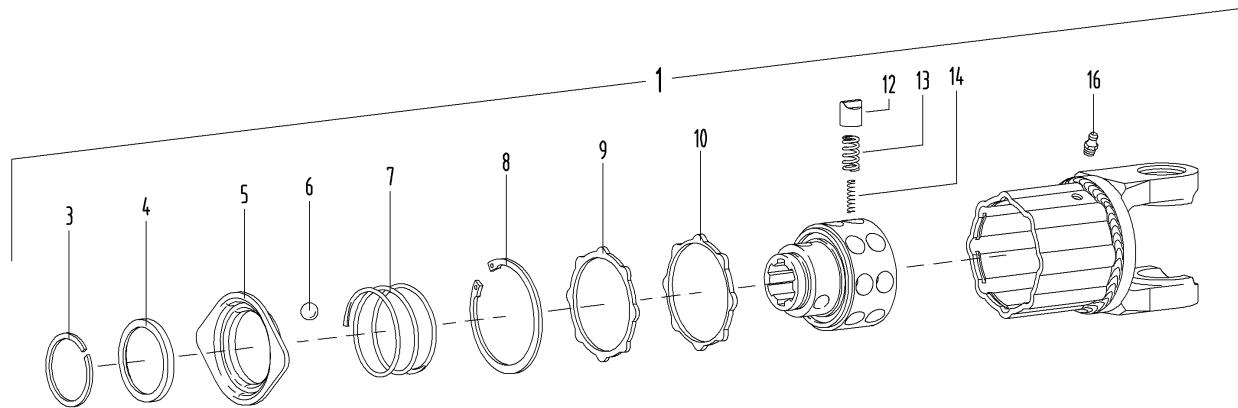
100277000B09

ANDEX 713 T EVO / joint shaft no protecting tube Walterscheid



PosNo.	Part No.	Qty.	Description	Remark
1	VF16609270	1	JOINT SHAFT	
11	VF06582596	1	JOINT FORK	
12	VF06581550	1	PIN	
13	VF16609628	1	SAFETY CLUTCH	B B13
21	VF06580484	2	JOINT CROSS	
22	VG63.27.00	2	GREASE NIPPLE	
23	VF06580486	1	JOINT FORK	
24	KG01192062	2	TENSION PIN 8X50	
27	VF06580488	1	JOINT FORK	

B11



1.002591.01

SW-GELW9

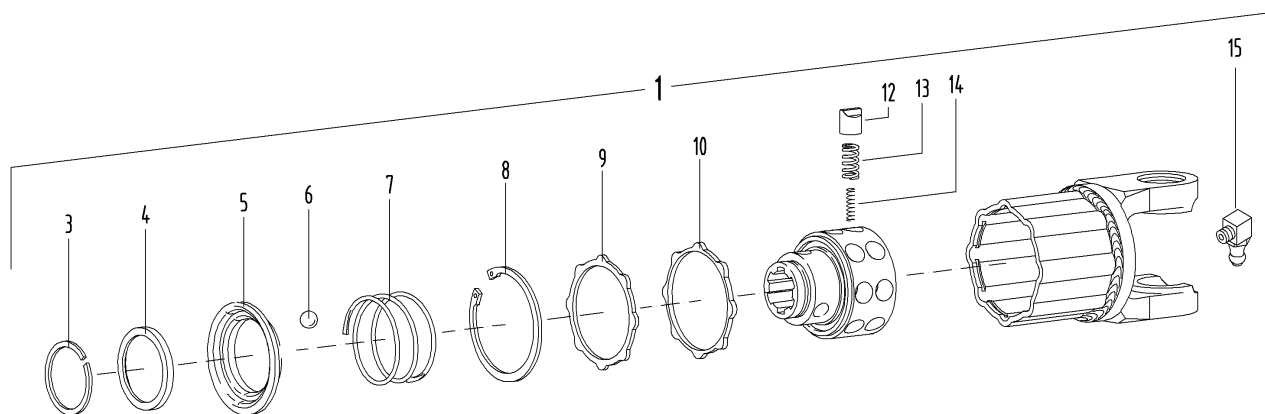
100259101B11

ANDEX 713 T EVO / safety clutch Walterscheid



PosNo.	Part No.	Qty.	Description	Remark
1	VF16643796	1	STAR RATCH K32B	B B07
3	VF01100388	1	SPRING RING	
4	VF06580091	1	RING	
5	VF06580089	1	LOCK	
6	VF16513608	3	BALL	
7	VF06580090	1	COMPRESSION SPRING	
8	VF16506111	1	CIRCLIP	
9	VF06580137	1	RING	
10	VF06243625	1	SEAL RING	
12	VF06564548	16	CAM	
13	VF06581483	16	OUTER SPRING	
14	VF06581485	4	INNER SPRING	
16	VF16606146	1	GREASE NIPPLE	

B13



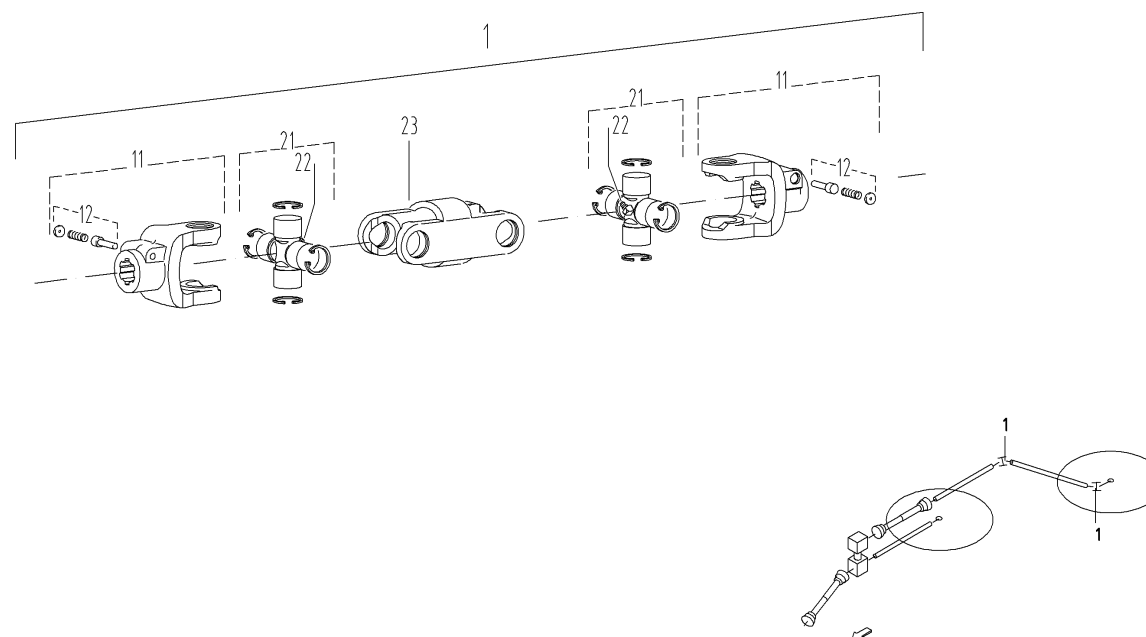
1.002591.03

SW-GEL18

100259103B13

Page number: 11

B14



1.002672.02

SW-GELDK1

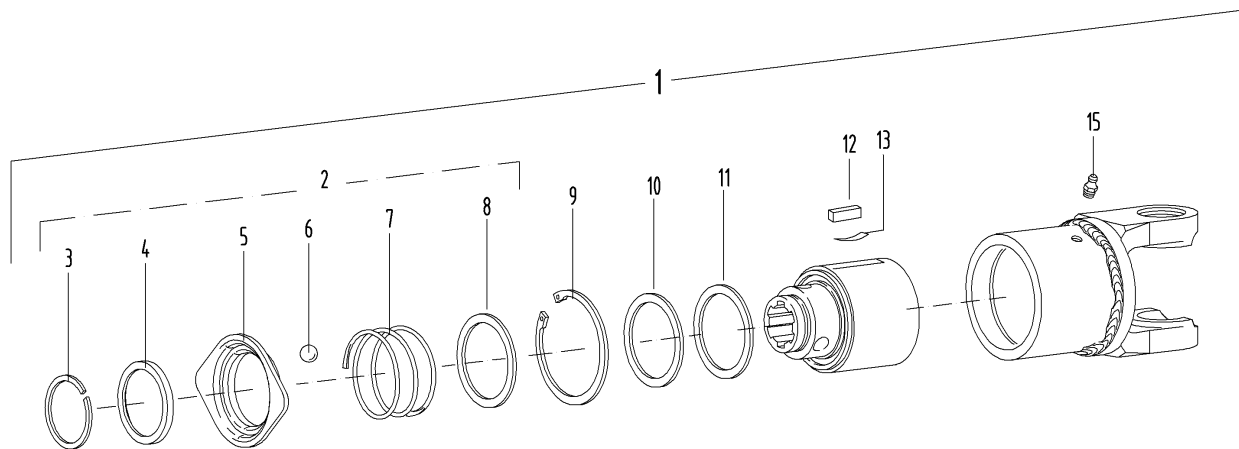
100267202B14

ANDEX 713 T EVO / double-joint Walterscheid



PosNo.	Part No.	Qty.	Description	Remark
1	VF16609272	2	DOUBLE CARDAN JOINT	
11	VF16504063	4	YOKE	
12	VF06581550	4	PIN	
21	VF16504064	4	JOINT CROSS	
22	VG63.27.00	4	GREASE NIPPLE	
23	VF06564521	2	DOUBLE FORK	

B15



1.002266.01

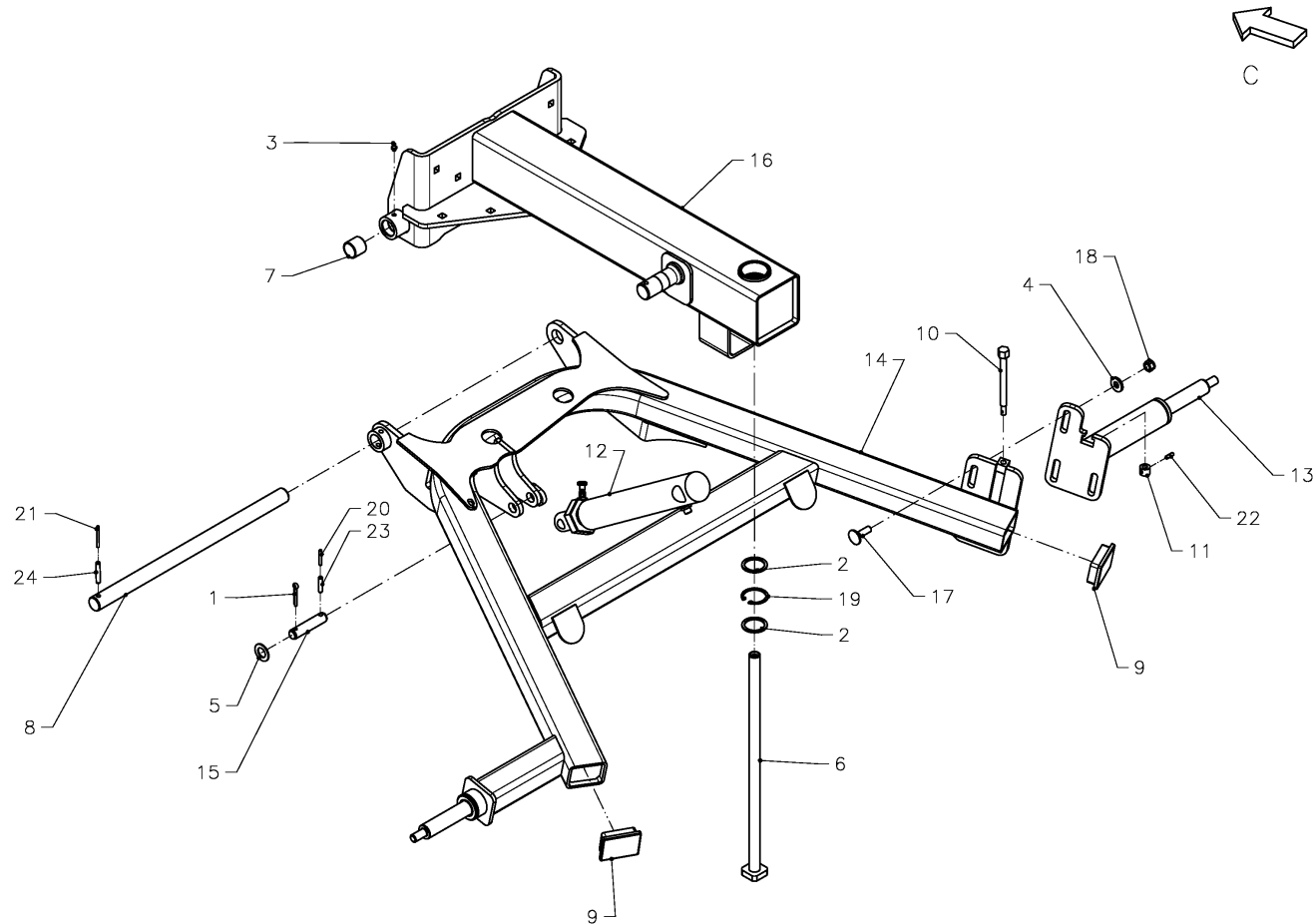
SW-GEL16

100226601B15

ANDEX 713 T EVO / freewheeld Walterscheid



PosNo.	Part No.	Qty.	Description	Remark
1	VF16624986	1	FREEWHEELD	
2	VF16500123	1	LOCK	
3	VF01139992	1	SNAP RING	
4	VF16500124	1	ANGLE RING	
5	VF06580089	1	LOCK	
6	VF01116963	3	BALL	
7	VF06580090	1	COMPRESSION SPRING	
8	VF06584164	1	SHIM	
9	VF01107850	1	CIRCLIP	
10	VF16624985	1	RETAINER LEFT	
11	VF16500125	1	SHIM	
12	VF16500126	2	LOCKING PIECE	
13	VF16500127	2	LEAF SPRING	
15	VGND9813V	1	GREASE NIPPLE	



SPMVF000251

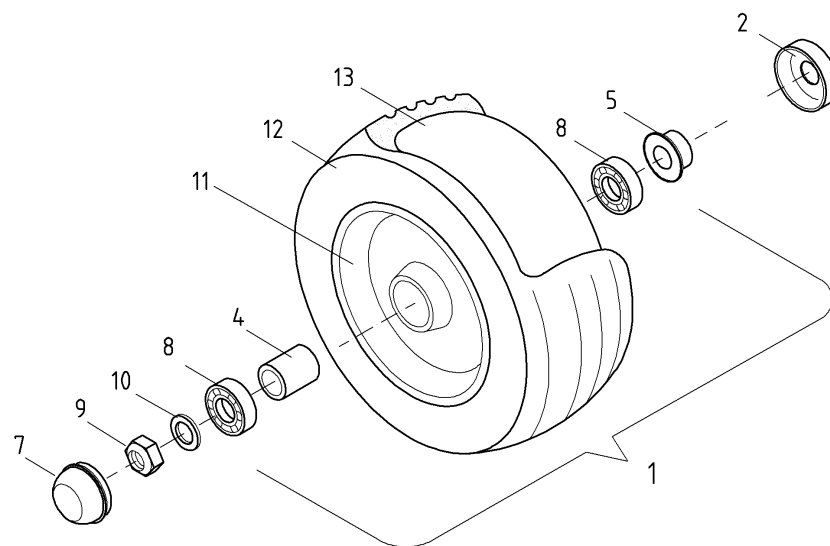
SPMVF000251



ANDEX 713 T EVO / Frame

PosNo.	Part No.	Qty.	Description	Remark
1	KG01253661	2	SPLIT PIN 6.3X36 ST	
2	VF01137379	3	SHIM	
3	VF01168225	4	GREASE NIPPLE	
4	VF06214206	6	WASHER	
5	KG01267961	2	WASHER M20	
6	VF16609312	1	CONNECTING TUBE	
7	VF16609996	2	BUSH	
8	VF16609999	2	AXLE/BEARING	
9	VF16623032	2	PLUG	
10	VF16624429	2	SET SCREW	
11	VF16624430	2	RING	
12	VF16641973	2	CYLINDER	
13	VF16642321.86	2	AXEL L = 378	
14	VF16642910.86	2	AXLE YOKE	
15	VF16642915	2	BOLT - USE KD0500242	
16	VF16642953.86	2	SUPPORT	
17	KG00645061	6	CARRIAGE BOLT M12X40 8.8	
18	KG01067761	6	LOCK NUT M12 8	
19	KG01128900	2	CIRCLIP-B 50 X 2	
20	KG01188162	2	TENSION PIN 5X36	
21	KG01188462	2	TENSION PIN 5X50	
22	KG01189162	2	TENSION PIN 6X20	
23	KG01191762	2	TENSION PIN 8X36	
24	KG01192062	2	TENSION PIN 8X50	

C02



1.000185.22

SW-REIF2

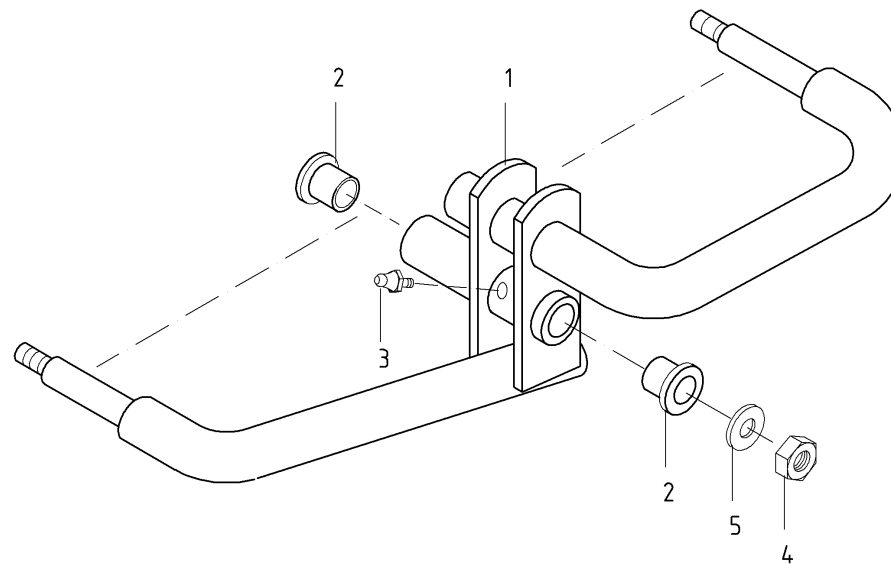
100018522C02

ANDEX 713 T EVO / tyres 18 x 8,5 - 8



PosNo.	Part No.	Qty.	Description	Remark
1	VF16642644	2	WHEEL 18X8, 5 - 8	
4	VF16609650	2	SPACER TUBE	
5	VF06589451	2	WASHER	
7	VF06589445	2	CAP	
8	KG01380800	4	BALL BEARING 6206-Z	
9	KG01067961	2	LOCK NUT M16 8	
10	KG01273961	4	WASHER M16	
11	VF16643118	2	RIM 6.50X8 SILVER	
12	VF16643129	2	TYRE 18X8.50 8 6PR	
13	VF16624998	2	HOSE 18X8,5-8	

C03



1.002762.00

SW-TAch

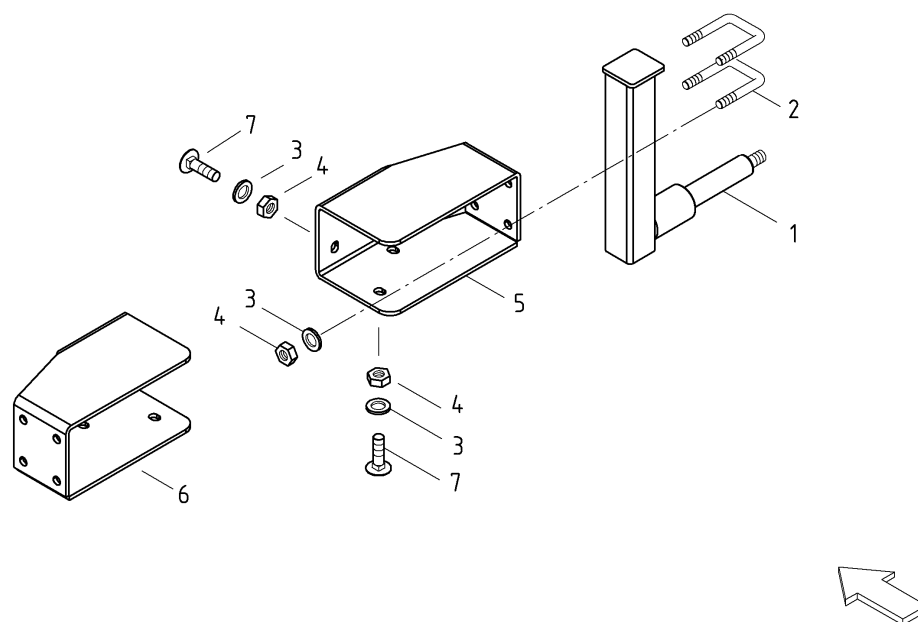
100276200C03

ANDEX 713 T EVO / tandem axle



PosNo.	Part No.	Qty.	Description	Remark
1	VF16624283.86	4	TANDEM AXLE	
2	VF16609239	8	FLANGED BUSH	
3	VGND9813V	4	GREASE NIPPLE	
4	KG01067961	4	LOCK NUT M16 8	
5	KG01273961	4	WASHER M16	

C04



1003042.00

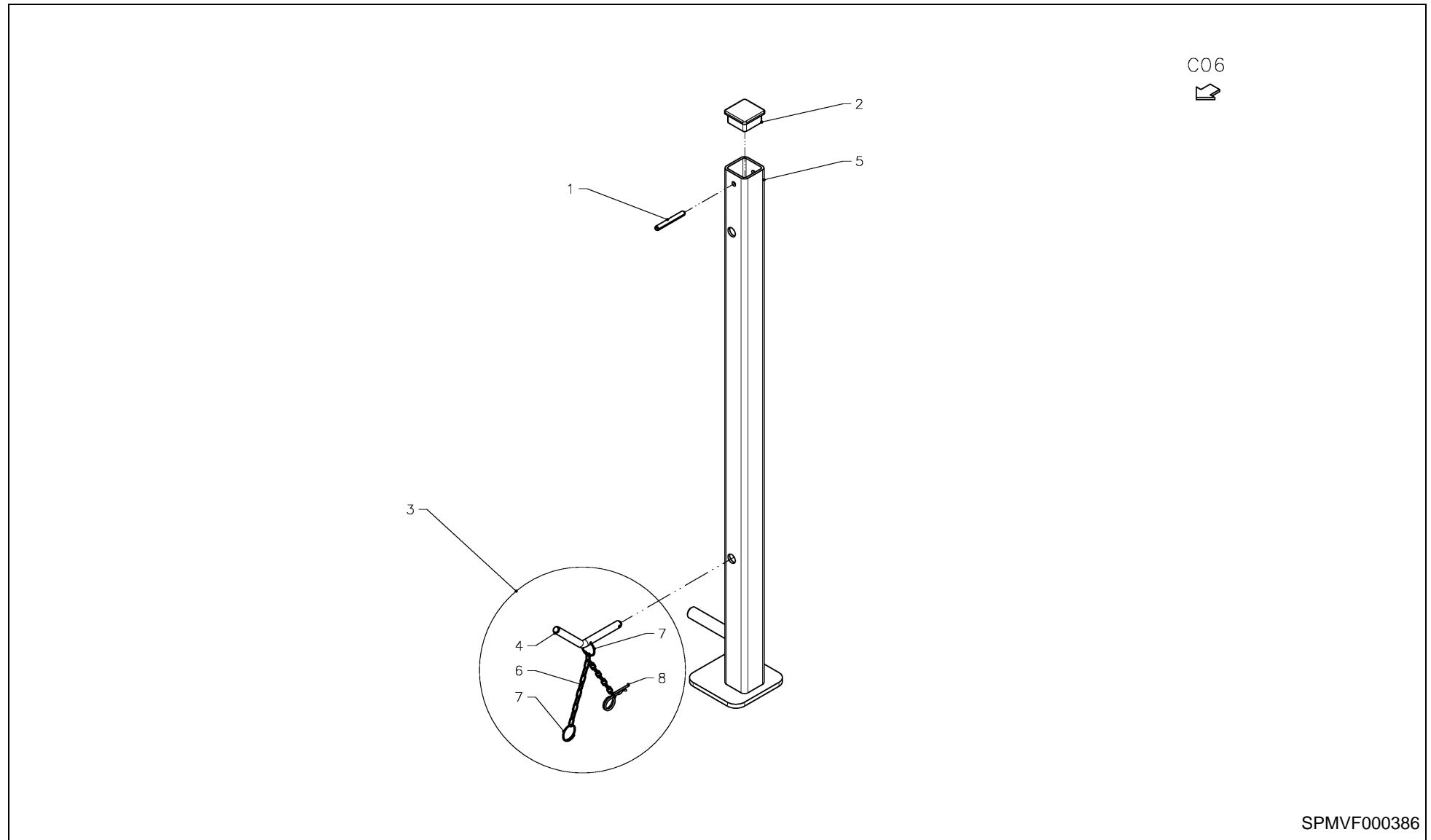
SW-TSTR

100304200C04

ANDEX 713 T EVO / land wheel



PosNo.	Part No.	Qty.	Description	Remark
1	VF16641977.86	2	PIPE	
2	VF16641970	4	SCREW	
3	KG01267561	16	WASHER M12	
4	KG01067761	16	LOCK NUT M12 8	
5	VF16641968.86	1	SUPPORT	
6	VF16641969.86	1	SUPPORT	
7	KG00645061	8	CARRIAGE BOLT M12X40 8.8	

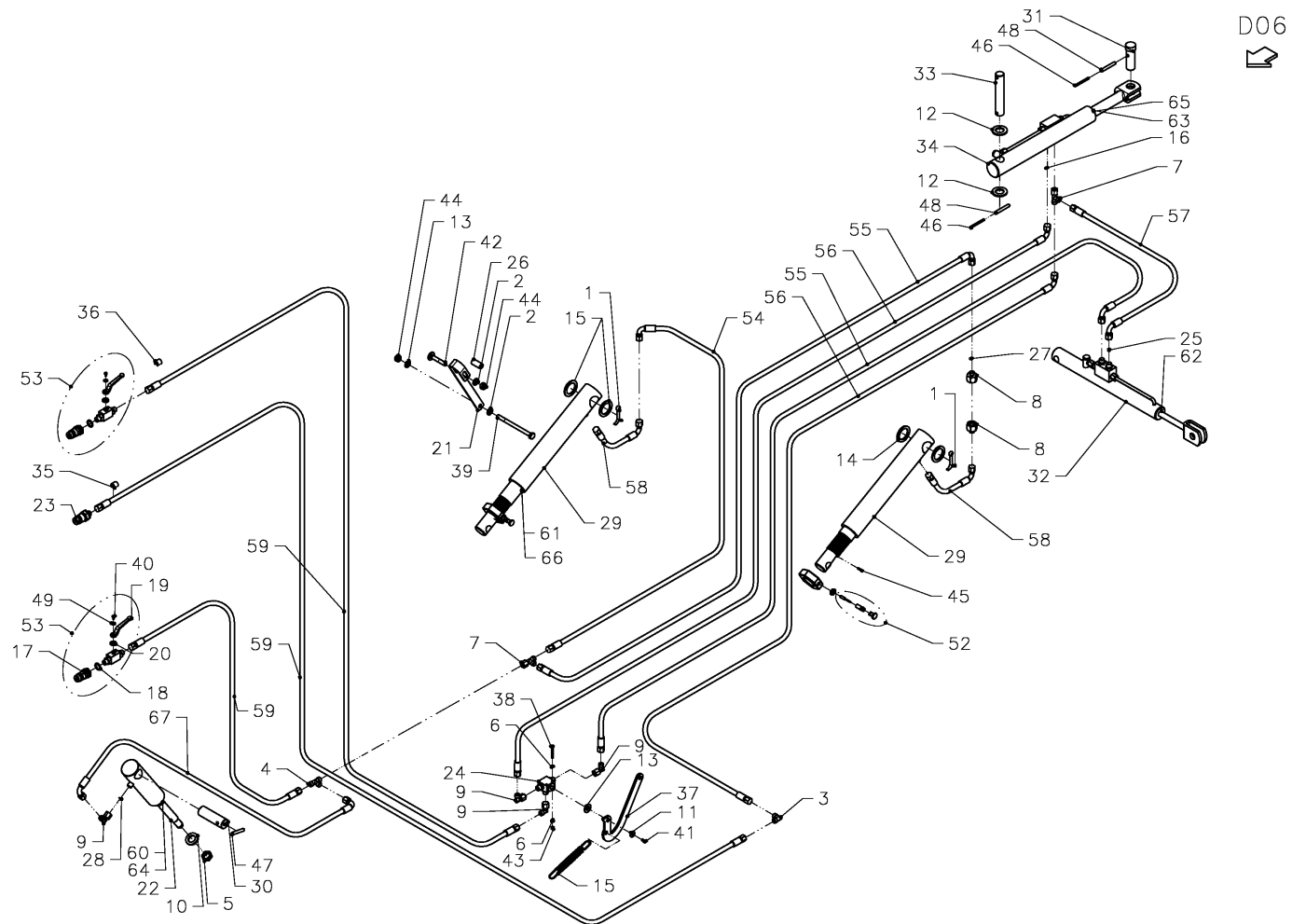


ANDEX 713 T EVO / support feed



PosNo.	Part No.	Qty.	Description	Remark
1	VF01157366	1	DOWEL PIN	
2	VF01397868	1	SQUARE PLUG	
3	VF16642851	1	PIN COMPL. D12	
4	VF16642866	1	---	
5	VF16643578.86	1	---	
6	KG01251861	1	SPLIT PIN 4X36 ST	
7	VF06250872	4	RING	
8	VGPZ160V	1	SPRING CLIP	

ANDEX 713 T EVO / hydraulic device



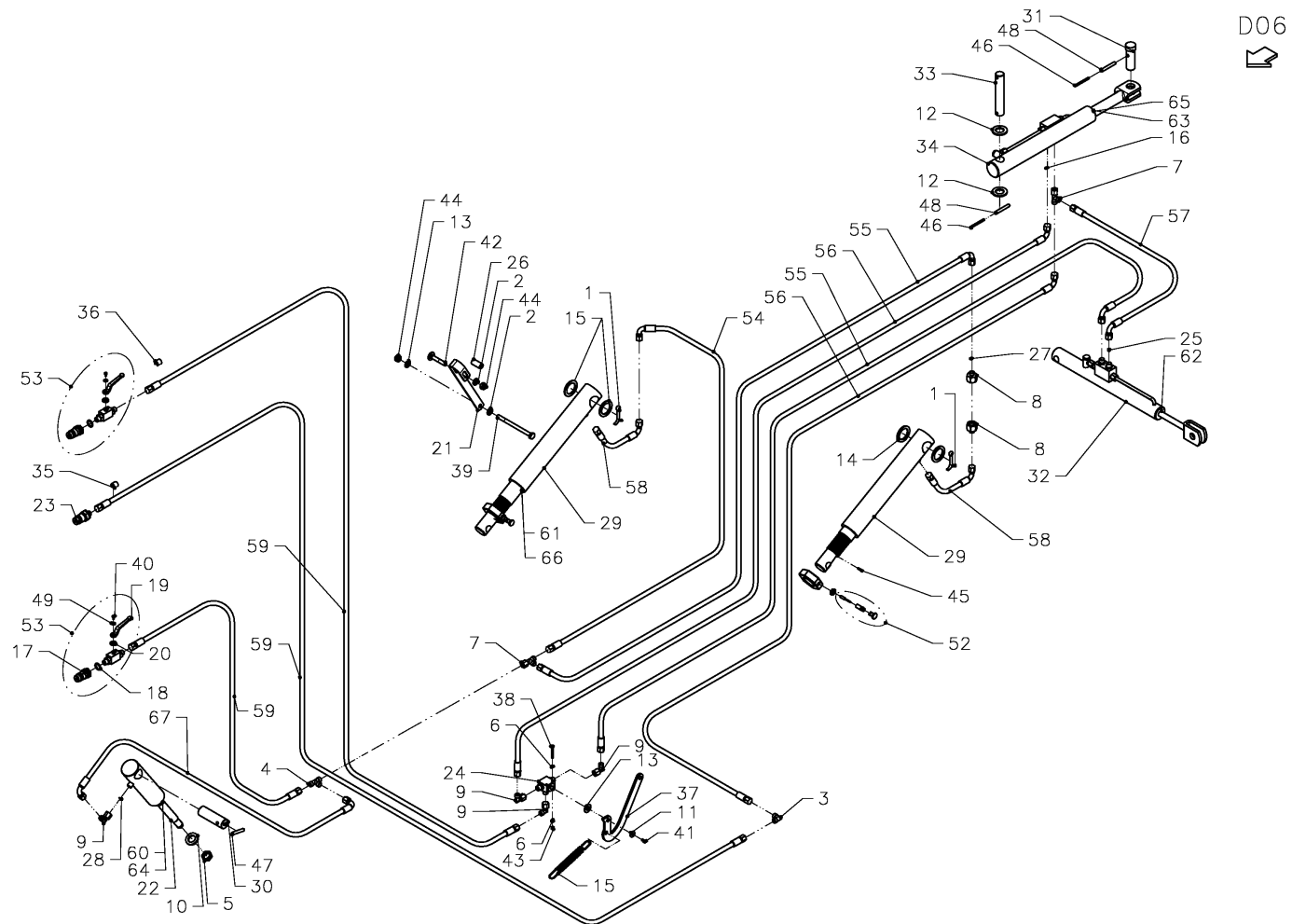
SPMVF000395



ANDEX 713 T EVO / hydraulic device

PosNo.	Part No.	Qty.	Description	Remark
1	VF01106500	2	SPLIT PIN	
2	KG01267461	3	WASHER M10	
3	VF01116731	1	SOCKET/ADAPTER	
4	VGND92043V	1	T-COUPLING, ADJUSTABLE	
5	VF01137633	1	NUT	
6	VF01138092	4	WASHER/DISC/PLATE	
7	VF01141654	2	T-UNION	
8	VF01141668	2	REDUCER INSERT	
9	VF01172986	4	ELBOW XE VW 8-L A3C	
10	VF02953402	1	WASHER/DISC/PLATE	
11	VGND3034V	1	WASHER, PLAIN	
12	KG01268161	2	WASHER M24	
13	VF06214269	1	WASHER	
14	VF06214329	4	WASHER	
15	VF06215536	1	TENSION SPRING	
16	VF06581181	1	SCREEN	
17	VF16604726	1	SAFETY PIN	
18	VF16604727	1	SEALING WASHER	
19	VF16604728	1	SHIFT LEVER	
20	VF16604729	1	SHIFT WASHER	
21	VF16609448	1	CLAMPING PIECE	
22	VF16609993	1	HYDR.CYLINDER	
23	VF16615171	2	PLUG COUPLING HYDR.	
24	VF16617533	1	CONTROL UNIT/ROOSTER	
24	VF16604729	1	SHIFT WASHER	
24	VF16604729	1	SHIFT WASHER	
25	VF16620370	1	COVERPLATE/SCREEN	
26	VF16621147	1	PIPE	
27	VF16624424	1	COVER PLATE	
28	VF16641657	1	COVER PLATE	
29	VF16641973	2	CYLINDER	
30	VF16641998	1	BOLZEN 30X98X81	
31	VF16642070	1	PIN	
32	VF16642079.86	1	HYDR. CYLINDER	
33	VF16642143	1	PIN	
34	VF16642208.86	1	HYDR. CYLINDER	
35	VF16642289	1	SCHLAUCHCLIP GELB D11.5-16	
36	VF16642290	1	SCHLAUCHCLIP ROT D11.5-16	
37	VF16643634	1	LEVER BL.6 FE/ZN	
38	KG00350161	2	HEX. BOLT M5X40 8.8	

ANDEX 713 T EVO / hydraulic device



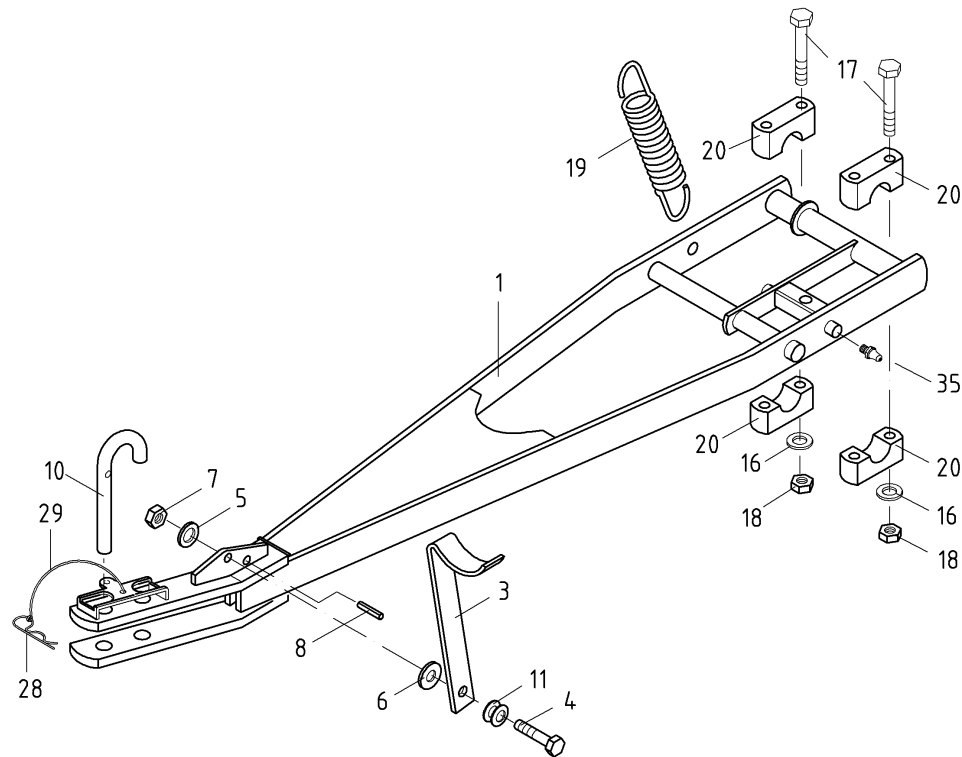
SPMVF000395



ANDEX 713 T EVO / hydraulic device

PosNo.	Part No.	Qty.	Description	Remark
39	KG00356761	1	HEX. BOLT M10X140 8.8	
40	KG00465861	1	HEX. SCREW M4X8 8.8	
41	KG00467061	1	HEX. SCREW M5X10 8.8	
42	KG00642161	1	CARRIAGE BOLT M10X60 8.8	
43	KG01067261	2	LOCK NUT M5	
44	KG01067661	2	LOCK NUT M10 8	
45	KG01186062	1	TENSION PIN 4X20	
46	KG01188562	2	TENSION PIN 5X60	
47	KG01192062	1	TENSION PIN 8X50	
48	KG01192162	2	TENSION PIN 8X60	
49	KG01267061	1	WASHER M4	
52	VF16642624	1	RASTBOLZEN MIT RAST- SPERRE M10X1.5	
53	VF16604641	1	ROOSTER WITH PIN	
54	VF16614906	1	HYDR. HOSE	
55	VF16642035	2	HYDR.HOSE	
56	VF16642038	2	HYDR.HOSE	
57	VF16607410	1	HYDR. HOSE	
58	VF16609458	2	HYDR.HOSE	
59	VF06571319	3	HYDR. HOSE	
60	VF16609622		SEALING SET	
61	VF16624980		SEALING SET	
62	VF16625118		SEAL KIT	
63	VF16625117		SEAL KIT	
64	VF16622946		SEALING SET SCHR#DER	
65	VF16625119		SEAL KIT	
66	VF16624979		SEALING SET	
67	VF16622315	1	HYDR.HOSE	

F01



1.003054.01

SW-DEIC1

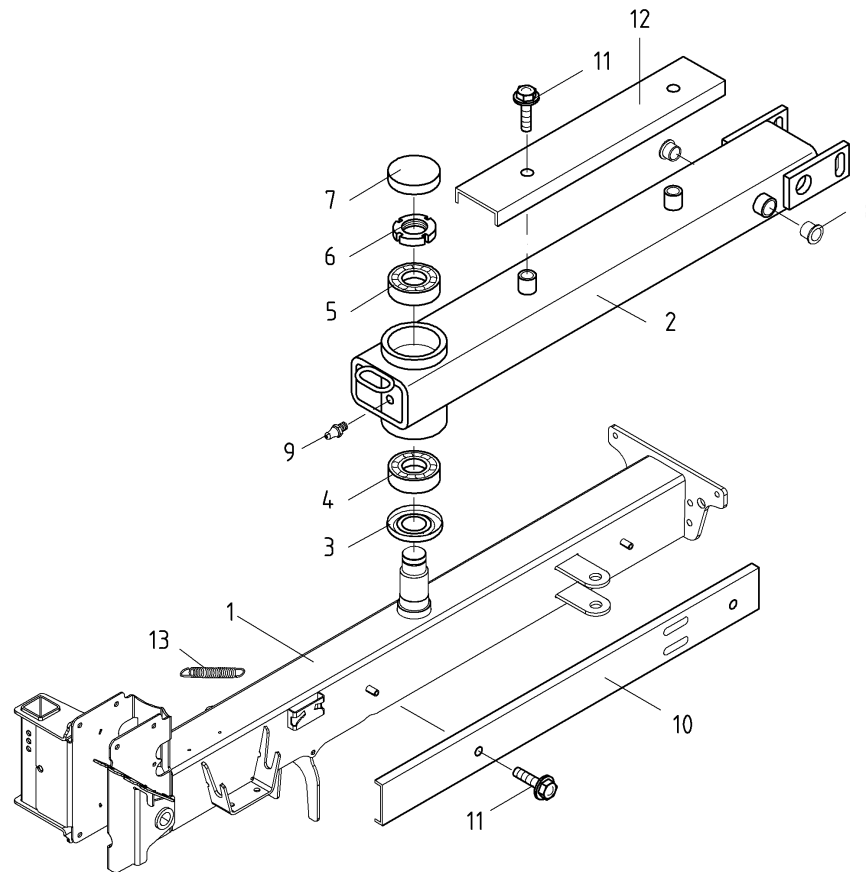
100305401F01



ANDEX 713 T EVO / Drawbar

PosNo.	Part No.	Qty.	Description	Remark
1	VF16609320.94	1	DRAWBAR WELDED	
3	VF16622159.86	1	SUPPORT	
4	KG00357561	1	HEX. BOLT M12X50 8.8	
5	KG01267561	1	WASHER M12	
6	VF01142230	1	WASHER	
7	KG01067761	1	LOCK NUT M12 8	
8	VF01157399	1	DOWEL PIN	
10	VF16621043	1	FIXING PIN	
11	KG01294562	2	DISC SPRING 25X12.2X1.5	
12	VGGZ124V	1	RING 2X25.2X42	
13	KG01189662	1	TENSION PIN 6X40	
16	VGTH100V	4	RING	
17	KG00337661	4	HEX. BOLT M12X100 10.9	
18	KG01068961	4	LOCK NUT M12 10	
19	VF16621269	1	DRAW SPRING	
20	VF16609479	4	TERMINAL RING	
28	VF06215672	1	SAFETY SPRING	
29	VF06564448	1	CORD	
35	VGND9813V	1	GREASE NIPPLE	

F02



1.003051.01

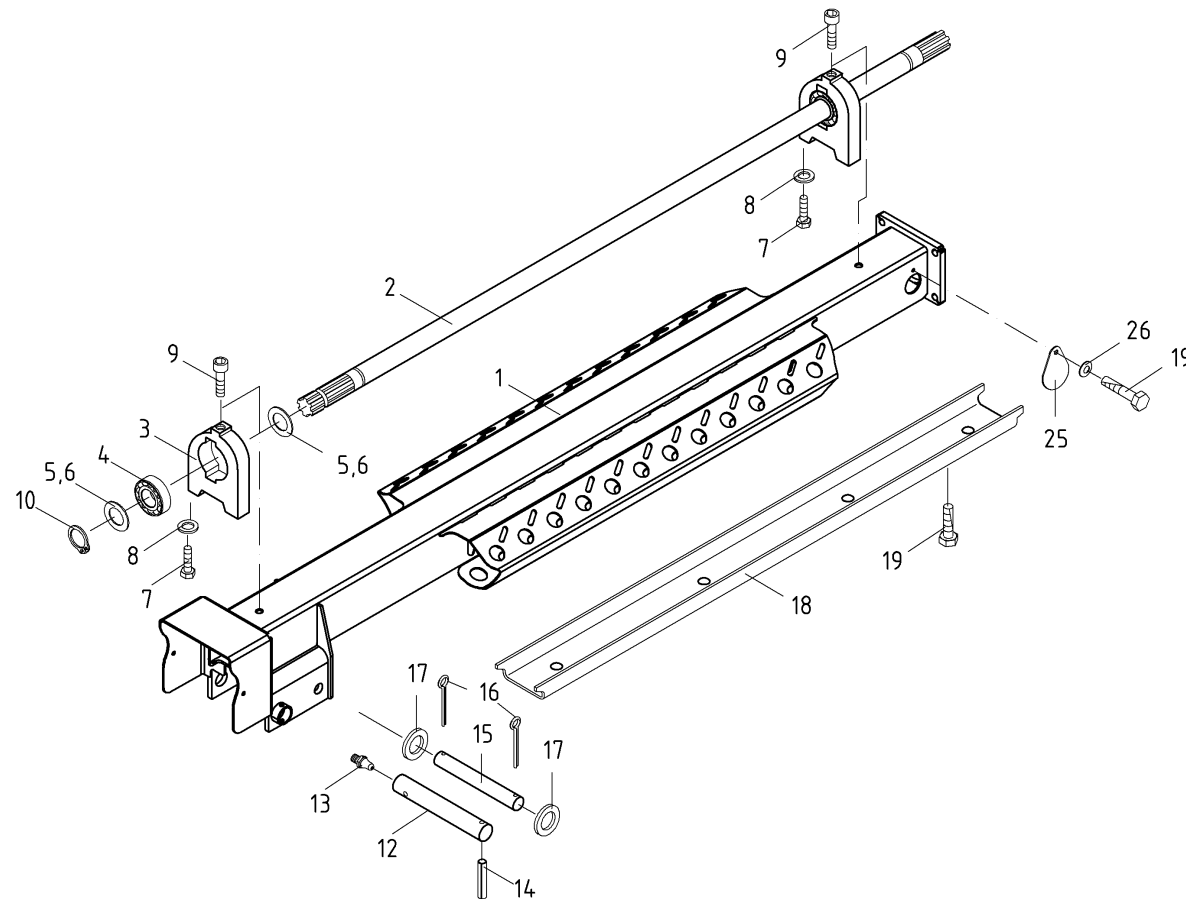
SW-Rahm2A

100305101F02



ANDEX 713 T EVO / drawbar in front

PosNo.	Part No.	Qty.	Description	Remark
1	VF16642333.94	1	FLANSCHROHR VORN GSW.	
2	VF16624792.94	1	JOINT ARM	
3	VF16609770	1	NILOS-RING	
4	KG01803100	1	TAPER ROLLER BEARING 32012 X	
5	KG01801400	1	TAPER ROLLER BEARING 30210	
6	VF16604951	1	GROOVED NUT	
7	VF16609452	1	CAP	
8	VF16607137	2	FLANGED BUSH	
9	VF01168225	1	GREASE NIPPLE	
10	VF16642014.94	1	CABLE CHANNEL L=900	
11	VF01174902	4	HEX HEAD SCREW	
12	VF16609477.94	1	CABLE CHANNEL	
13	VF06215536	1	TENSION SPRING	
14	VF16642040.94	1	ANTIROTAT.SECURITY	



F03

1.003052.01

SW-RAHM7A

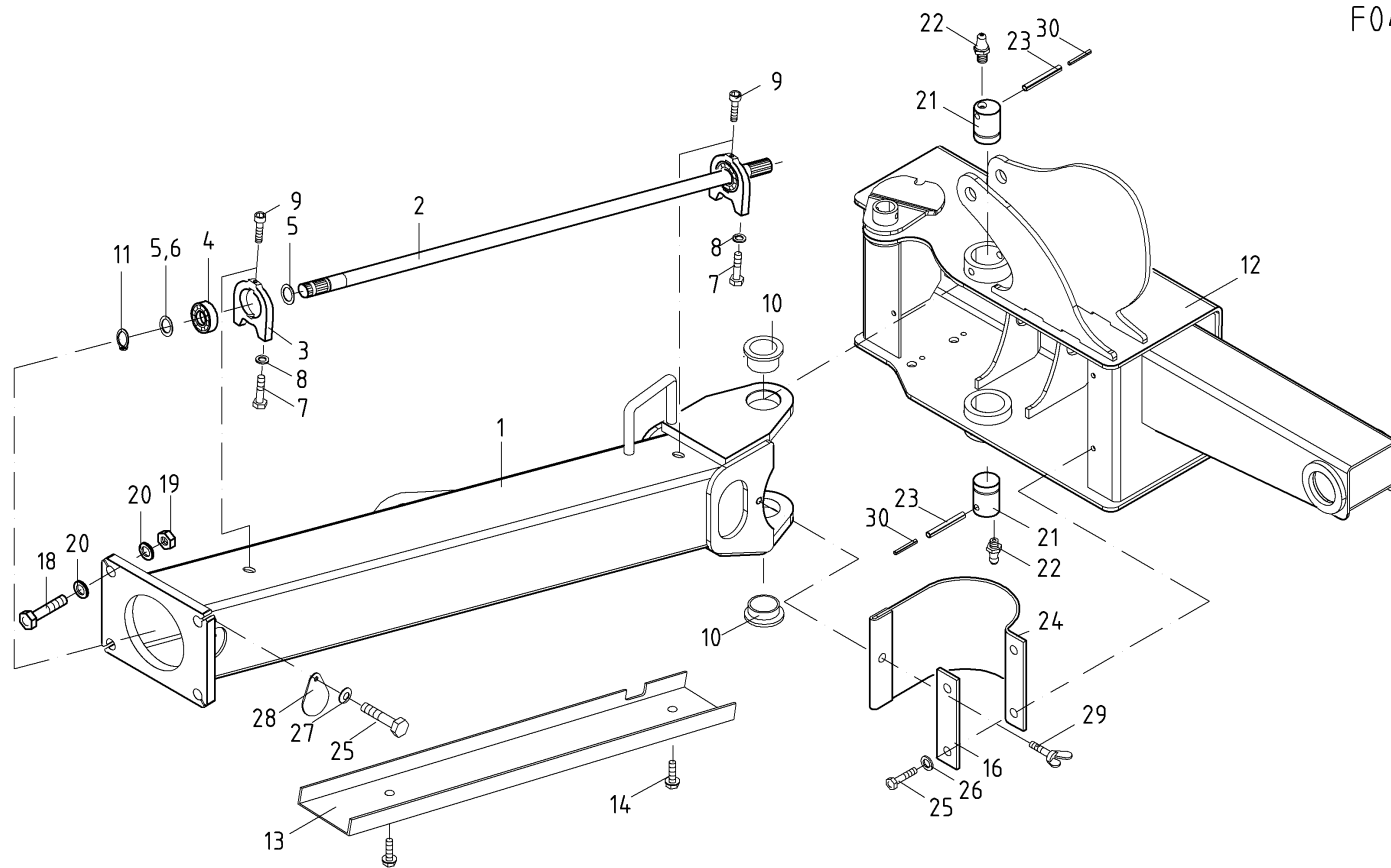
100305201F03



ANDEX 713 T EVO / frame centric

PosNo.	Part No.	Qty.	Description	Remark
1	VF16642025.94	1	PIPE	
2	VF16641547	1	DRIVE SHAFT	
3	VF16609375	2	FLANGED HOUSING	
4	VF06215767	2	CUSHION, ADJUSTABLE	
5	VF01137526	2	WASHER	
6	VF06214485	2	SPACER	
7	VF06209465	4	HEX.HEAD SCREW	
8	KG01267461	4	WASHER M10	
9	VF16616545	2	SCREW	
10	VF01107749	1	CIRCLIP	
12	VF16609373	1	PIVOT PIN	
13	VGND9813V	1	GREASE NIPPLE	
14	KG01192062	1	TENSION PIN 8X50	
15	VF16609374	1	PIN/BOLT	
16	KG01253661	2	SPLIT PIN 6.3X36 ST	
17	VGGZ124V	2	RING 2X25.2X42	
18	VF16642417.94	1	KABELFÜHRUNG L=1800	
19	VF01174902	4	HEX HEAD SCREW	
25	VF16624425	1	COVERING PIECE	
26	VF06210691	1	CUP SPRING	

ANDEX 713 T EVO / frame back



F04

1.003053.01

SW-RAHM3A

100305301F04



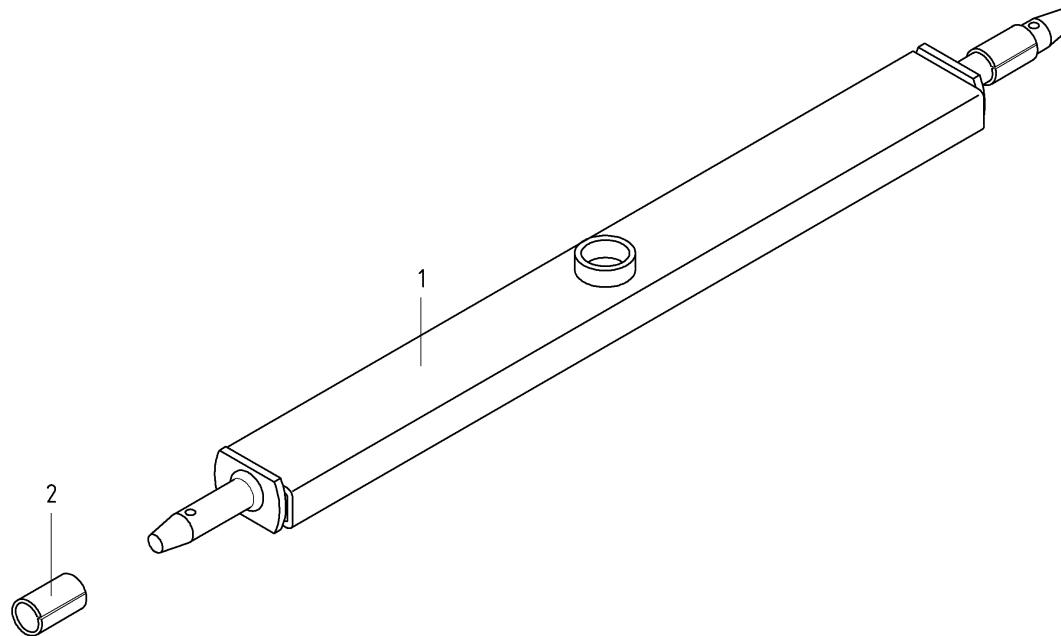
ANDEX 713 T EVO / frame back

PosNo.	Part No.	Qty.	Description	Remark
1	VF16642408.94	1	FLANSCHROHR HI. GSW.	
2	VF16609360	1	DRIVE SHAFT	
3	VF16609375	2	FLANGED HOUSING	
4	VF06215767	2	CUSHION, ADJUSTABLE	
5	VF01137526	2	WASHER	
6	VF06214485	2	SPACER	
7	VF06209465	4	HEX.HEAD SCREW	
8	KG01267461	4	WASHER M10	
9	VF16616545	2	SCREW	
10	VF16609752	2	FLANGED BUSH	
11	VF01107749	1	CIRCLIP	
12	VF16642017.94	1	CROSS CARRIER	
13	VF16624000.94	1	CABLE CHANNEL	
14	VF01174902	2	HEX HEAD SCREW	
16	VF16624431	2	CLIP	
18	KG00338861	4	HEX. BOLT M16X60 10.9	
19	KG01069161	4	LOCK NUT M16 10	
20	KG01267761	8	WASHER M16	
21	VF16609481	2	PIVOT PIN	
22	VGND9813V	2	GREASE NIPPLE	
23	KG01194462	2	TENSION PIN 10X75	
24	VF16609408	2	RUBBER PACKING	
25	VF01174902	5	HEX HEAD SCREW	
27	VF06210691	1	CUP SPRING	
28	VF16624425	1	COVERING PIECE	
29	VF01138921	2	WINGED SCREW	
30	VF01157350	2	DOWEL PIN	

ANDEX 713 T EVO / coupling device



F05



1.002763.00

SW-ASCH1

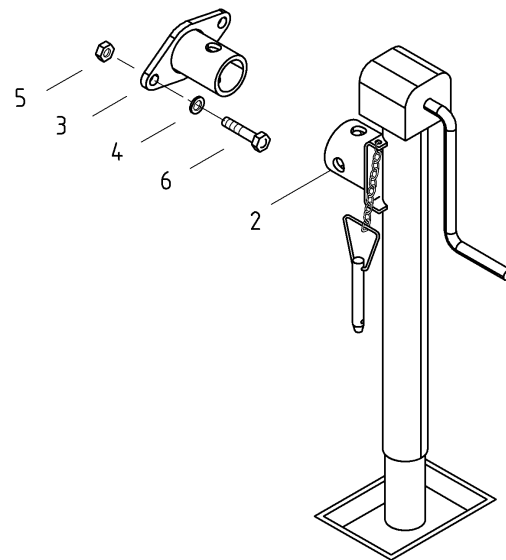
100276300F05

ANDEX 713 T EVO / coupling device



PosNo.	Part No.	Qty.	Description	Remark
1	VF16609428.86	1	TOOLBAR	
2	VF06210270	2	TIGHTENING-PIN	

F06



1.003060.00

SW-STFS

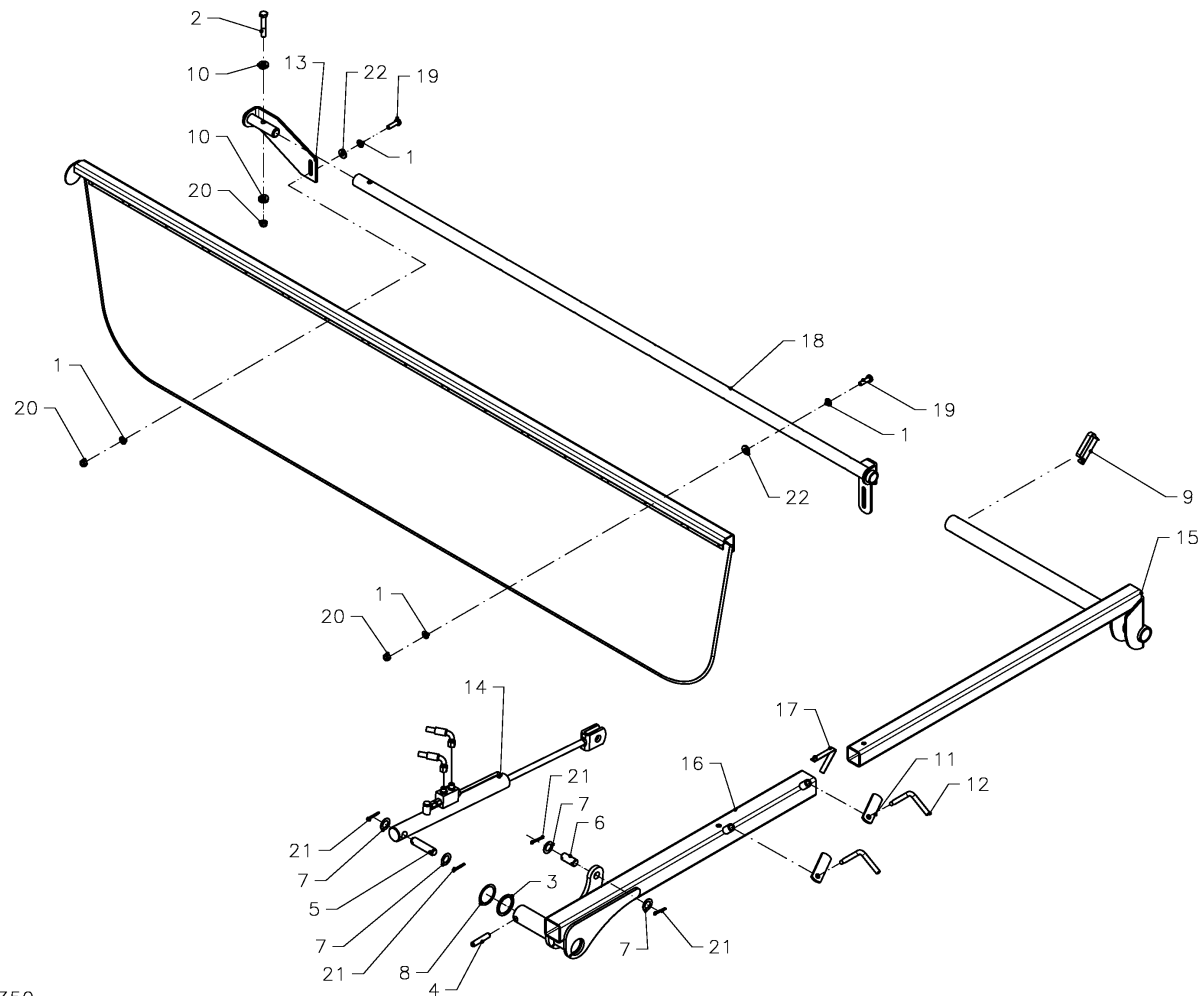
100306000F06

ANDEX 713 T EVO / support adjustable



PosNo.	Part No.	Qty.	Description	Remark
2	VF16652144	1	SUPPORT	
3	VF16654365	2	SUPPORT	
4	KG01267561	4	WASHER M12	
5	KG01067761	4	LOCK NUT M12 8	
6	KG00476661	4	HEX. SCREW M12X35 8.8	

ANDEX 713 T EVO / swath sheet



GO 1



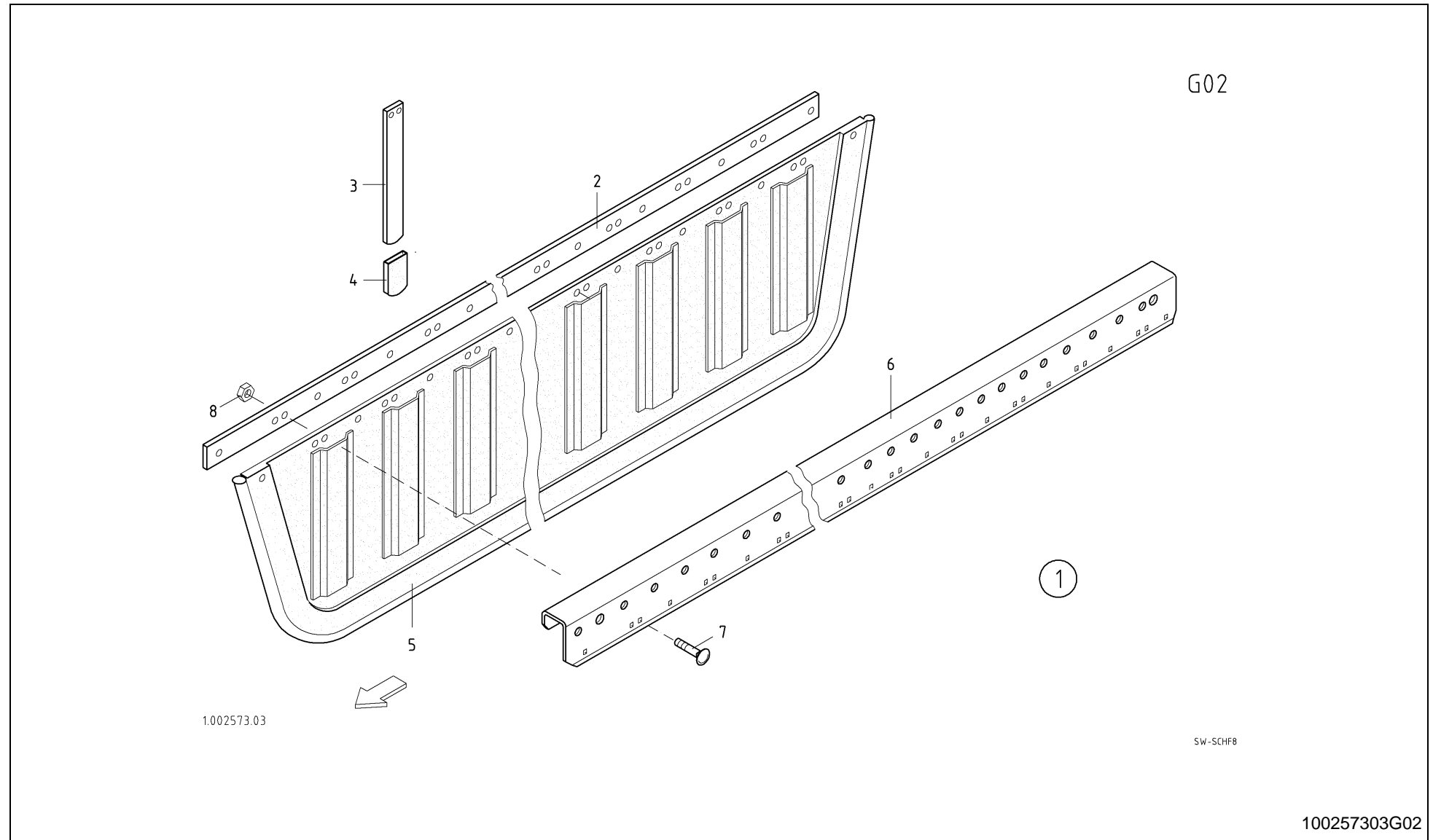
SPMVF000350

SPMVF000350



ANDEX 713 T EVO / swath sheet

PosNo.	Part No.	Qty.	Description	Remark
1	KG01267461	4	WASHER M10	
2	KG00477361	1	HEX. SCREW M12X70 8.8	
3	VGND3028V	2	RING	
4	VF01157404	1	DOWEL PIN	
5	VF02953320	1	PIN/BOLT/STUD	
6	VGMT100V	1	PIN	
7	KG01267961	4	WASHER M20	
8	VGMT0063	1	SHIM SET	
9	VF16508095	1	CLIP PIN	
10	VF16606401	2	SHIM	
11	VF16606477	2	THREADED PLATE	
12	VF16606478	2	THUMB SCREW	
13	VF16621156.86	1	ANGLE BAR	
14	VF16642079.86	1	HYDR. CYLINDER	
15	VF16642088.86	1	PIPE	
16	VF16642089.86	1	PIPE	
17	VF16642867	1	SPRING	
18	VF16642886.86	1	GREASING TUBE	
19	KG00474461	2	HEX. SCREW M10X35 8.8	
20	KG01067661	3	LOCK NUT M10 8	
21	KG01252661	4	SPLIT PIN 5X32 ST	
22	KG01273661	2	WASHER M10	

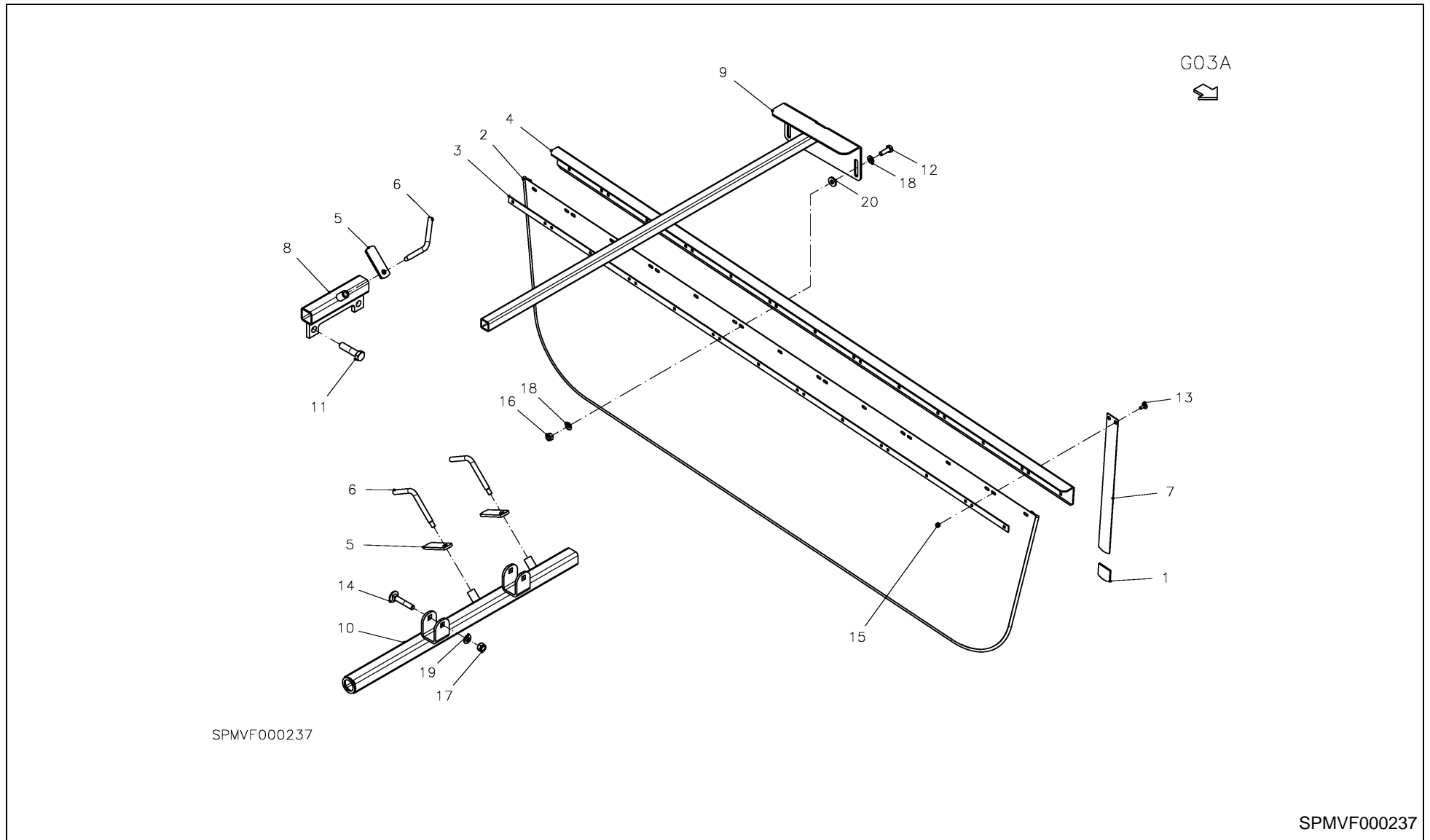


100257303G02

ANDEX 713 T EVO / swath sheet



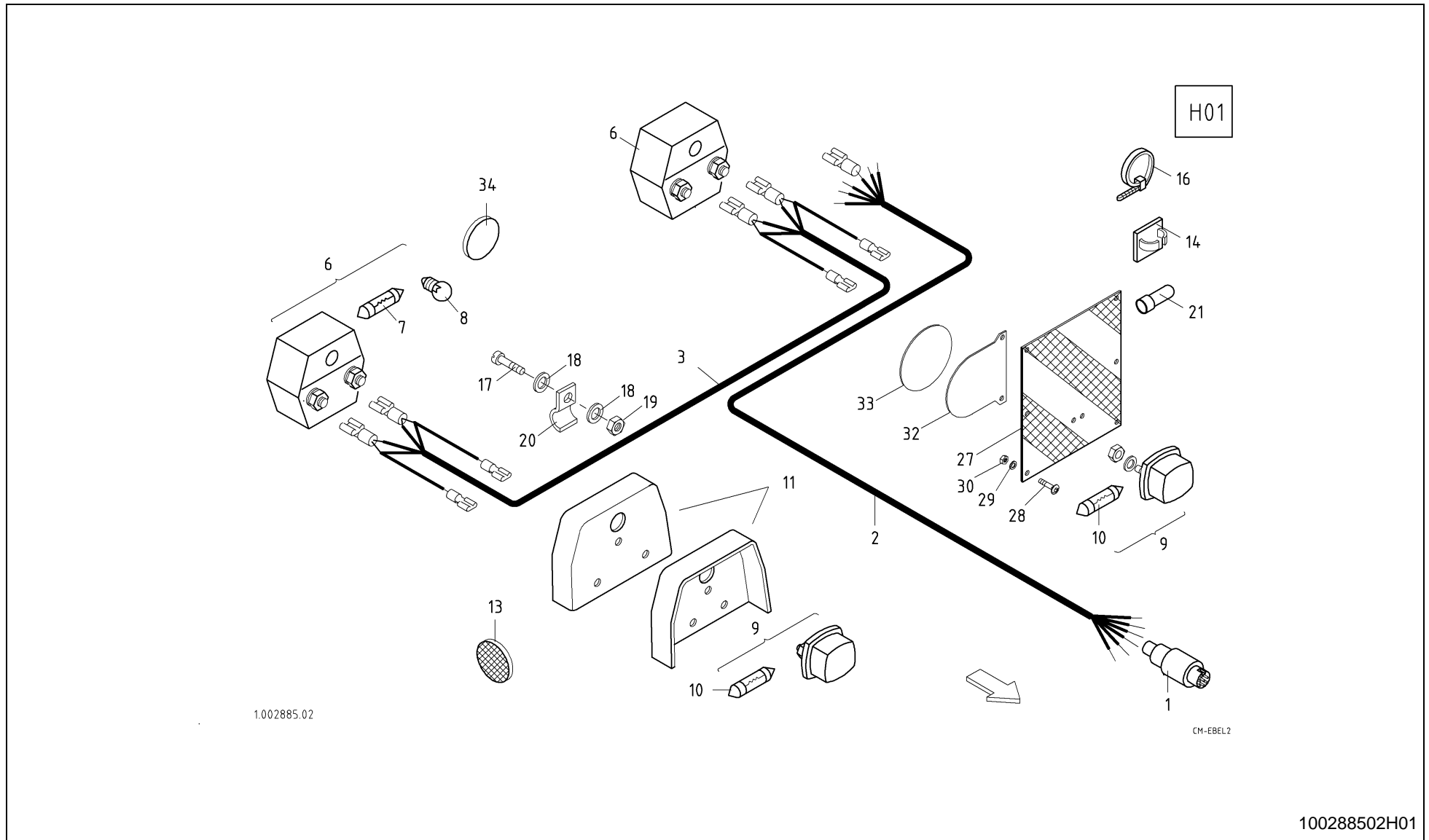
PosNo.	Part No.	Qty.	Description	Remark
1	VF16642437.86	1	SCHWADTUCH 8 TASCHEN GRAU RAL 7021 KPL.	
2	VF16605856	1	FASTENING RAIL	
3	VF16609031	8	ROD	
4	VF06565179	8	CAP	
5	VF16605852.86	1	SWATH CLOTH	
6	VF16642439.86	1	LEISTE 8STB. L=2546	
7	KG00637061	25	CARRIAGE BOLT M6X16 8.8	
8	KG01067361	25	LOCK NUT M6 8	





ANDEX 713 T EVO / swath sheet

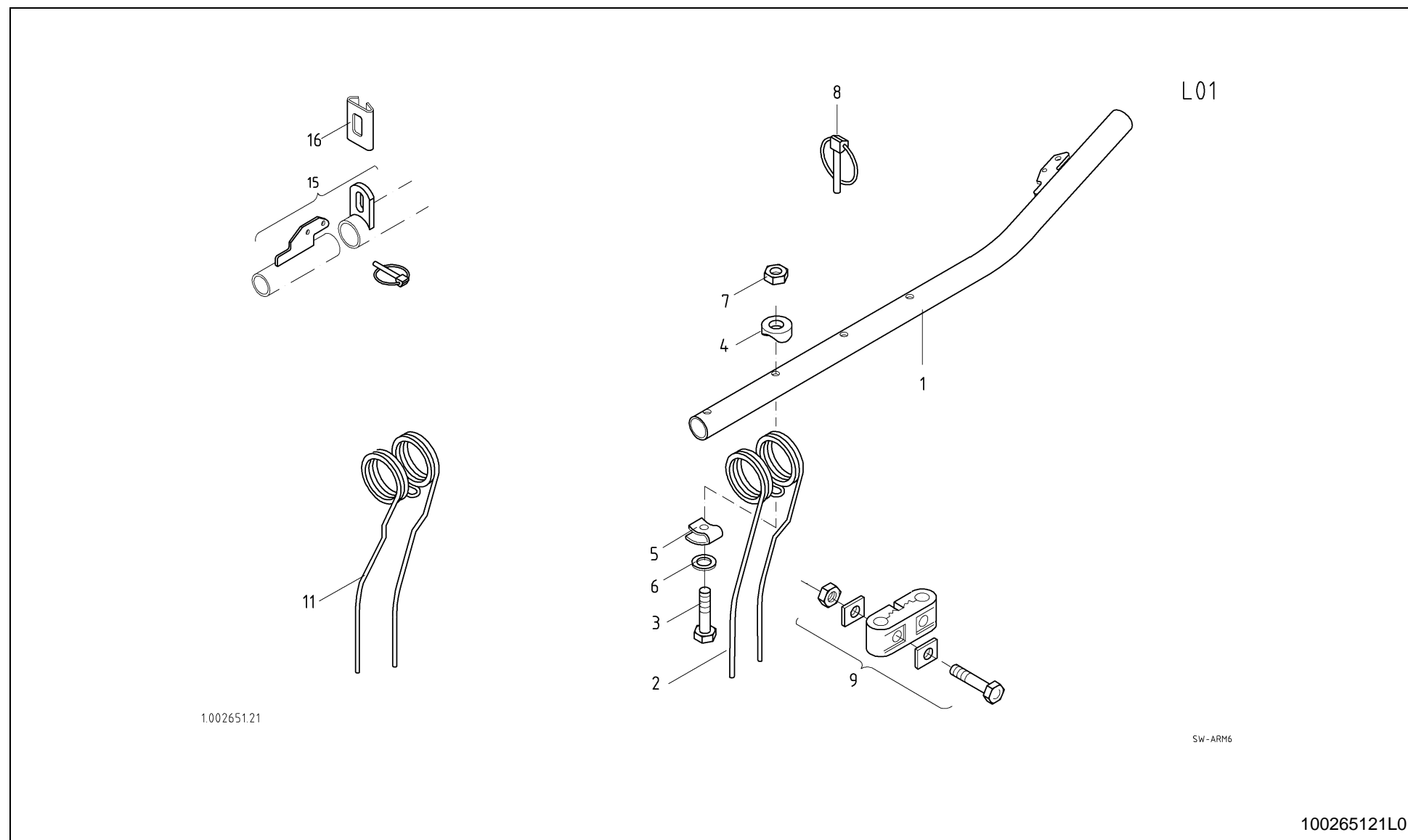
PosNo.	Part No.	Qty.	Description	Remark
1	VF06565179	6	CAP	
2	VF06565271.86	1	SWATH CLOTH	
3	VF06565295	1	BAR	
4	VF06565296.86	1	BAR	
5	VF16606477	3	THREADED PLATE	
6	VF16606478	3	THUMB SCREW	
7	VF16609031	6	ROD	
8	VF16624648.86	1	SUPPORT	
9	VF16642900.86	1	SUPPORT L = 1255 HP 30X30X	
10	VF16642902.86	1	SUPPORT	
11	KG00338961	2	HEX. BOLT M16X65 10.9	
12	KG00474361	2	HEX. SCREW M10X30 8.8	
13	KG00637061	19	CARRIAGE BOLT M6X16 8.8	
14	KG00645661	2	CARRIAGE BOLT M12X70 8.8	
15	KG01067361	19	LOCK NUT M6 8	
16	KG01067661	2	LOCK NUT M10 8	
17	KG01067761	2	LOCK NUT M12 8	
18	KG01267461	4	WASHER M10	
19	KG01267561	2	WASHER M12	
20	KG01273661	2	WASHER M10	





ANDEX 713 T EVO / lighting

PosNo.	Part No.	Qty.	Description	Remark
1	VF01121327	1	PLUG SOCKET	X2
2	VF16642807	1	WIRE/CABLE WITH PLUG L = 9750 BEIDS. 7-P	
3	VF16625128	1	INTERMEDIATE CABLE	
6	VF16600345	2	TAIL LIGHT	
6	VF16641492		SPARE GLASS	X6
7	VF01121409	2	BULB	
8	VF01102550	2	BULB	
9	VF16641604	2	SIDE LIGHT	
9	VF16641491		SPARE GLASS	X9
10	VF01121444	2	TUBE LAMP	
11	VF16602584	4	GUARD	
13	VF06214037	6	REAR REFLECT. YELLOW	
14	VF16613283	6	CABLE RETAINER	
16	VF16604765	8	CABLE CONNECTOR	
17	VF01105524	2	CHEESE HEAD SCREW	
18	VF01138092	4	WASHER/DISC/PLATE	
19	KG01067261	2	LOCK NUT M5	
20	VF06216397	2	FIXING CLIP	
21	VF16602585	10	CONNECTOR/UNION ARTIKELBEZ. L-RBI	
27	VF16620666	2	WARNING PLATE	
28	VF01142565	9	TRUSS-HEAD SCREW	
29	KG01267361	9	WASHER M8	
30	KG01067561	9	LOCK NUT M8 8	
32	VF16641444	1	PLATE	
33	VF01141381	1	MARKING PLATE	
34	VF16623510	2	REAR REFLECTOR	

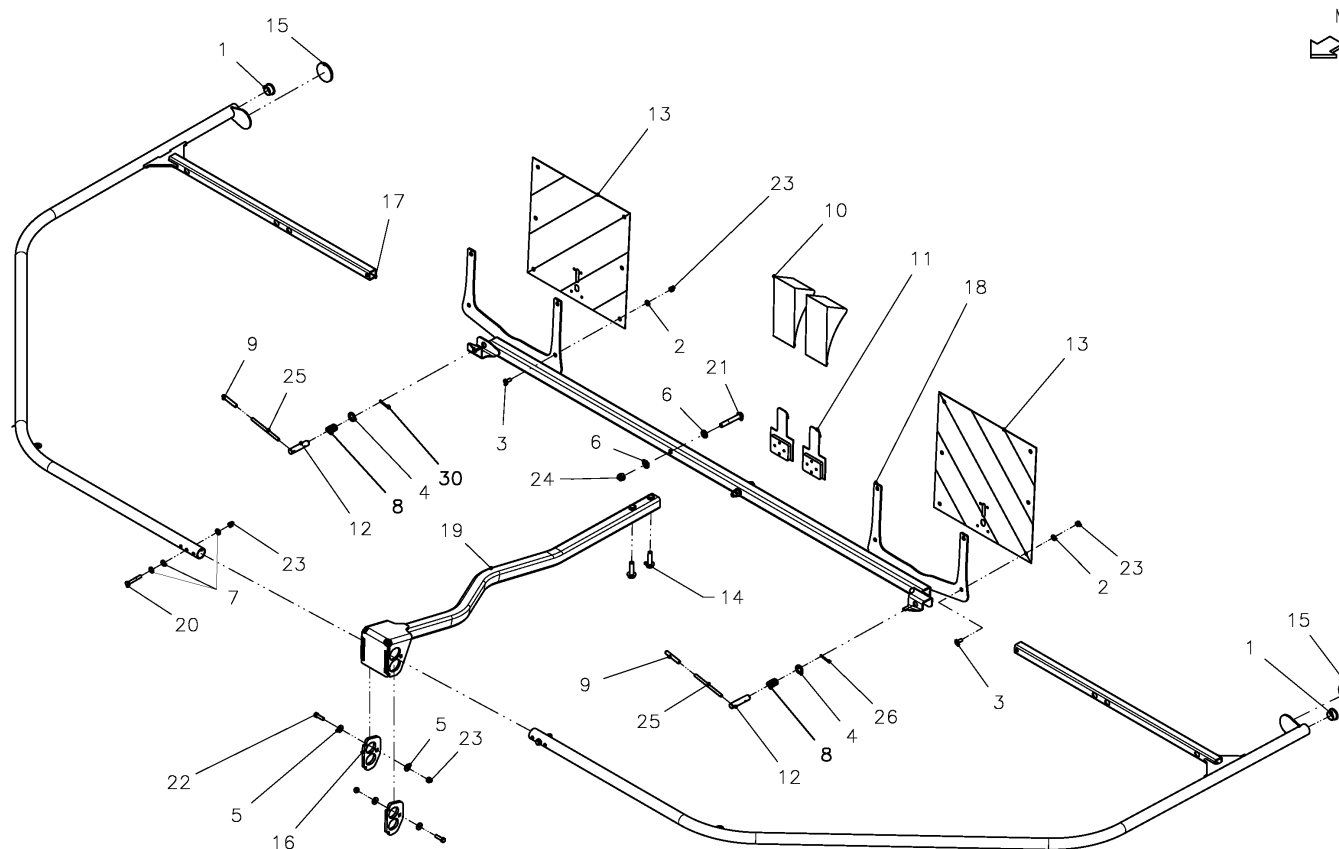


ANDEX 713 T EVO / support



PosNo.	Part No.	Qty.	Description	Remark
1	VF16624596.86	22	SUPPORT LEFT	
2	VF16624404.86	88	SPRING TINE	
3	KG00358161	88	HEX. BOLT M12X80 8.8	
4	VF16606401	88	SHIM	
5	VF16606396	88	CLAMP	
6	VGTH100V	88	RING	
7	KG01067761	88	LOCK NUT M12 8	
8	VF01397617	22	FOLDING PLUG	
9	VF06564420	88	TINE SAFETY DEVICE	
15	VF16624118		REPAIR KIT	for 1 arm
16	VF16640711	88	PLATE	

ANDEX 713 T EVO / protection device (-5466)



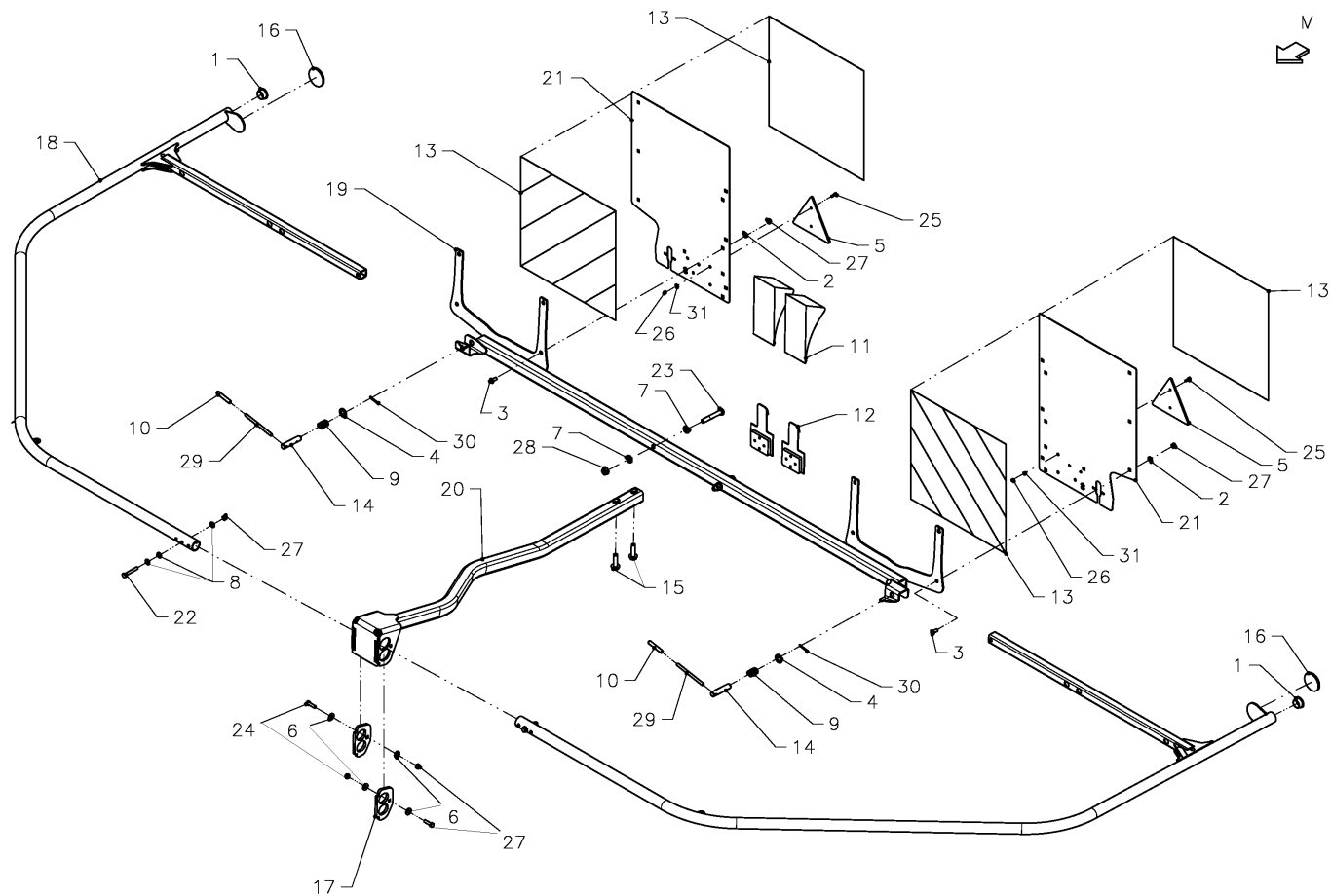
SPMVF000548



ANDEX 713 T EVO / protection device (-5466)

PosNo.	Part No.	Qty.	Description	Remark
1	VF01097625	2	PLUG	
2	VF01107101	2	WASHER	
3	VF01142565	2	TRUSS-HEAD SCREW	
4	VF01174923	2	WASHER, PLAIN	
5	VF06214246	4	WASHER	
6	KG01267561	4	WASHER M12	
7	VF06214358	6	WASHER	
8	VF06215292	2	SPRING, COMPRESSION	
9	VF16606585	2	CAP	
10	VF16608181	2	BLOC	
11	VF16608182	2	RETAINER	
12	VF16609482	2	STOPPING BOLT	
13	VF16620666	2	WARNING PLATE	
14	VF16623233	2	CHEESE-HEAD SCREW M12X45-100	
15	VF16623510	2	REAR REFLECTOR	
16	VF16641769	2	PLATE	
17	VF16642043.86	2	YOKE	
18	VF16642100.86	1	SUPPORT/CARRIER	
19	VF16642234.86	1	SUPPORT TUBE	
20	KG00353561	2	HEX. BOLT M8X55 8.8	
21	KG00358161	2	HEX. BOLT M12X80 8.8	
22	KG00639261	4	CARRIAGE BOLT M8X30 8.8	
23	KG01067561	6	LOCK NUT M8 8	
24	KG01067761	4	LOCK NUT M12 8	
25	KG01192562	2	TENSION PIN 8X120	
26	KG01251561	2	SPLIT PIN 4X25 ST	

ANDEX 713 T EVO / protection device (5467)



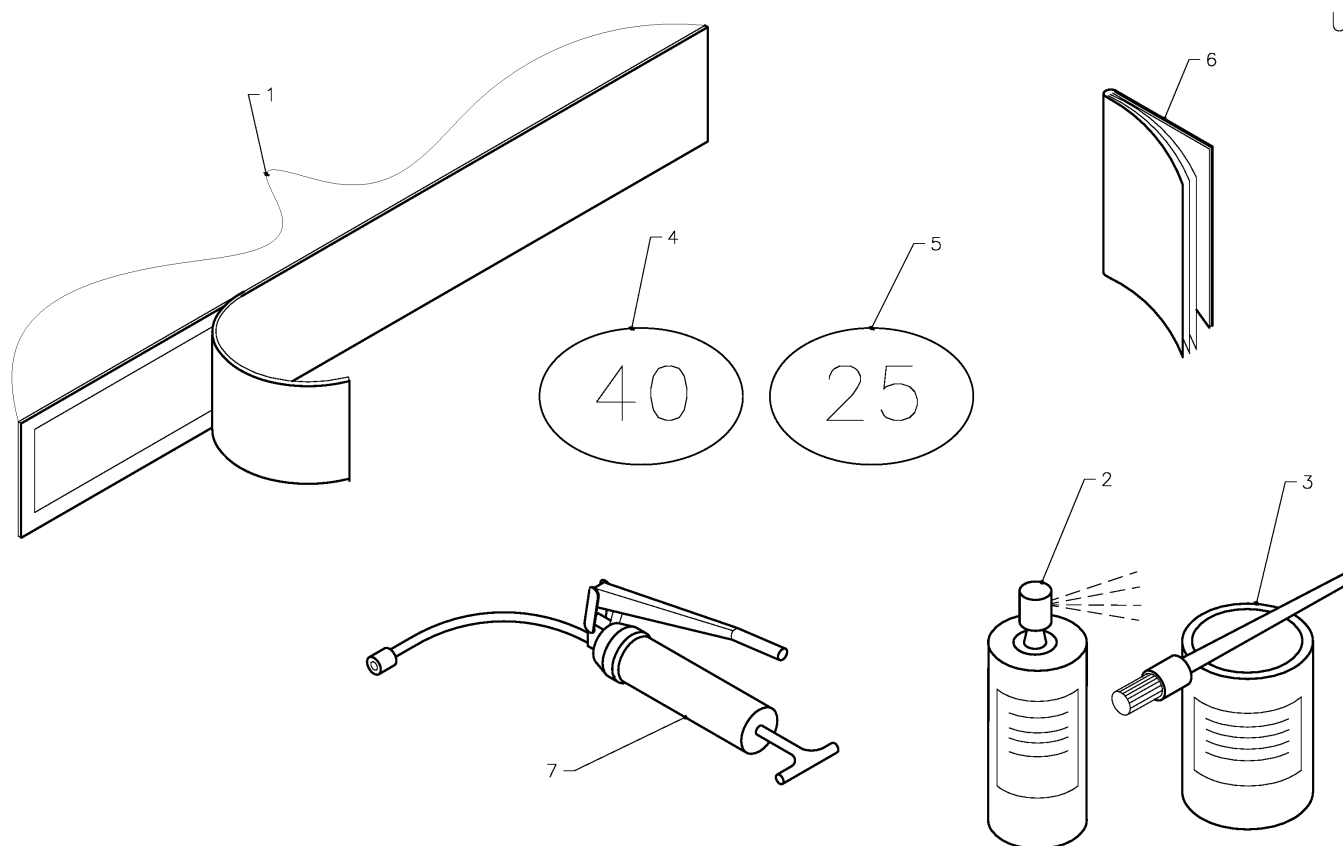
SPMVF000550

SPMVF000550



ANDEX 713 T EVO / protection device (5467)

PosNo.	Part No.	Qty.	Description	Remark
1	VF01097625	2	PLUG	
2	VF01107101	2	WASHER	
3	VF01142565	2	TRUSS-HEAD SCREW	
4	VF01174923	2	WASHER, PLAIN	
5	VF06214042	2	REAR-REFLECTOR	
6	VF06214193	4	WASHER	
7	KG01267561	4	WASHER M12	
8	VF06214246	12	WASHER	
9	VF06215292	2	SPRING, COMPRESSION	
10	VF16606585	2	CAP	
11	VF16608181	2	BLOC	
12	VF16608182	2	RETAINER	
13	VF16609081	4	LABEL	
14	VF16609482	2	STOPPING BOLT	
15	VF16623233	2	CHEESE-HEAD SCREW M12X45-100	
16	VF16623510	2	REAR REFLECTOR	
17	VF16641769	2	PLATE	
18	VF16642043.86	2	YOKE	
19	VF16642100.86	1	SUPPORT/CARRIER	
20	VF16642234.86	1	SUPPORT TUBE	
21	VF16644284	2	SHEET	
22	KG00353561	2	HEX. BOLT M8X55 8.8	
23	KG00358161	2	HEX. BOLT M12X80 8.8	
24	KG00639261	4	CARRIAGE BOLT M8X30 8.8	
25	KG00542161	4	CHEESE HEAD SCREW M5X16 8.8	
26	KG01067261	4	LOCK NUT M5	
27	KG01067561	6	LOCK NUT M8 8	
28	KG01067761	4	LOCK NUT M12 8	
29	KG01192562	2	TENSION PIN 8X120	
30	KG01251561	2	SPLIT PIN 4X25 ST	
31	KG01267161	4	WASHER M5	



SPMVF000551

SPMVF000551



ANDEX 713 T EVO / paint label

PosNo.	Part No.	Qty.	Description	Remark
1	VF16641924	1	LABEL 7131	
2	VF02953342.80	1	GREEN PEINT-SPRAY	
2	VF01008301	1	SILVER PAINT-SPRAY	
2	VF02953359.86	1	BLACK-GREY SPRAY	
3	VF02953358.86	1	PAINT BLACK-GREY	
3	VF01008346	1	PAINT SILVER	
3	VF01009375.80	1	PAINT DEUTZ-GREEN	
4	VF01141381	1	MARKING PLATE	
5	VF16621945	1	SPEEDLIMIT STICKER	
6	VF16643769	1	LIVRET REMPLACE PAR KG16621298	
6	VF16643770	1	LIVRET REMPLACE PAR KG16621298	
7	VF06215179	1	GREASE GUN	
7	VF02953321	1	LUBRICANT	
7	VF06513515	1	LUBE HOSE	

ANDEX 713 T EVO / Part No Index



Part No.	Page	Pos No	Part No.	Page	Pos No	Part No.	Page	Pos No	Part No.	Page	Pos No
KG00043700	3	26	KG00743163	5	52	KG01132300	3	6	KG01267561	25	4
KG00043800	2	2	KG00743163	6	52	KG01186062	19	45	KG01267561	28	19
KG00161100	3	34	KG00743163	7	52	KG01188162	14	20	KG01267561	31	6
KG00337661	20	17	KG00743163	8	52	KG01188462	14	21	KG01267561	32	7
KG00338861	23	18	KG01051961	2	15	KG01188562	19	46	KG01267761	23	20
KG00338961	28	11	KG01067261	19	43	KG01189162	14	22	KG01267961	14	5
KG00350161	19	38	KG01067261	29	19	KG01189662	20	13	KG01267961	26	7
KG00353561	2	17	KG01067261	32	26	KG01191762	14	23	KG01268161	19	12
KG00353561	31	20	KG01067361	1	8	KG01192062	9	24	KG01273661	26	22
KG00353561	32	22	KG01067361	27	8	KG01192062	14	24	KG01273661	28	20
KG00356761	19	39	KG01067361	28	15	KG01192062	19	47	KG01273961	15	10
KG00357561	20	4	KG01067561	29	30	KG01192062	22	14	KG01273961	16	5
KG00358161	30	3	KG01067561	31	23	KG01192162	19	48	KG01294562	20	11
KG00358161	31	21	KG01067561	32	27	KG01192562	31	25	KG01308500	2	8
KG00358161	32	23	KG01067661	1	4	KG01192562	32	29	KG01380800	15	8
KG00465861	19	40	KG01067661	19	44	KG01194462	23	23	KG01381100	2	12
KG00467061	19	41	KG01067661	26	20	KG01251561	31	26	KG01381900	2	3
KG00469161	1	6	KG01067661	28	16	KG01251561	32	30	KG01403800	3	12
KG00469461	1	11	KG01067761	14	18	KG01251861	18	6	KG01404000	3	31
KG00474361	28	12	KG01067761	17	4	KG01252661	26	21	KG01799800	3	17
KG00474461	26	19	KG01067761	20	7	KG01253661	14	1	KG01801400	21	5
KG00476661	25	6	KG01067761	25	5	KG01253661	22	16	KG01803100	21	4
KG00477361	26	2	KG01067761	28	17	KG01267061	19	49	VF01008301	33	2
KG00542161	32	25	KG01067761	30	7	KG01267161	32	31	VF01008346	33	3
KG00637061	27	7	KG01067761	31	24	KG01267361	29	29	VF01009375.80	33	3
KG00637061	28	13	KG01067761	32	28	KG01267461	1	3	VF01097625	31	1
KG00639261	31	22	KG01067961	15	9	KG01267461	19	2	VF01097625	32	1
KG00639261	32	24	KG01067961	16	4	KG01267461	22	8	VF01100388	10	3
KG00642161	19	42	KG01068961	3	44	KG01267461	23	8	VF01100388	11	3
KG00645061	14	17	KG01068961	20	18	KG01267461	26	1	VF01102550	29	8
KG00645061	17	7	KG01069161	23	19	KG01267461	28	18	VF01105524	29	17
KG00645661	28	14	KG01128900	14	19	KG01267561	17	3	VF01106500	19	1
KG00743163	4	52	KG01130900	3	18	KG01267561	20	5	VF01107101	31	2

ANDEX 713 T EVO / Part No Index



Part No.	Page	Pos No	Part No.	Page	Pos No	Part No.	Page	Pos No	Part No.	Page	Pos No
VF01107101	32	2	VF01157366	18	1	VF06214246	32	8	VF06580089	13	5
VF01107749	22	10	VF01157399	20	8	VF06214269	19	13	VF06580090	10	7
VF01107749	23	11	VF01157404	26	4	VF06214329	19	14	VF06580090	11	7
VF01107850	13	9	VF01168225	14	3	VF06214358	31	7	VF06580090	13	7
VF01111524	3	49	VF01168225	21	9	VF06214485	2	10	VF06580091	10	4
VF01116731	19	3	VF01172986	19	9	VF06214485	22	6	VF06580091	11	4
VF01116963	13	6	VF01174902	21	11	VF06214485	23	6	VF06580137	10	9
VF01120606	3	19	VF01174902	22	19	VF06215179	33	7	VF06580137	11	9
VF01120692	5	22	VF01174902	23	14	VF06215292	31	8	VF06580408	8	23
VF01120692	7	22	VF01174902	23	25	VF06215292	32	9	VF06580484	9	21
VF01120698	3	13	VF01174923	31	4	VF06215536	19	15	VF06580486	9	23
VF01120700	11	15	VF01174923	32	4	VF06215536	21	13	VF06580488	9	27
VF01121327	29	1	VF01177466	3	29	VF06215672	20	28	VF06581181	19	16
VF01121409	29	7	VF01397617	30	8	VF06215767	22	4	VF06581483	10	13
VF01121444	29	10	VF01397868	18	2	VF06215767	23	4	VF06581483	11	13
VF01137379	14	2	VF02953320	26	5	VF06216397	29	20	VF06581485	10	14
VF01137526	22	5	VF02953321	33	7	VF06243625	10	10	VF06581485	11	14
VF01137526	23	5	VF02953342.80	33	2	VF06243625	11	10	VF06581550	4	12
VF01137633	19	5	VF02953358.86	33	3	VF06250872	18	7	VF06581550	6	12
VF01137725	2	9	VF02953359.86	33	2	VF06513515	33	7	VF06581550	7	14
VF01138092	19	6	VF02953402	19	10	VF06564420	30	9	VF06581550	8	12
VF01138092	29	18	VF06209193	1	2	VF06564448	20	29	VF06581550	9	12
VF01138921	23	29	VF06209465	22	7	VF06564521	12	23	VF06581550	12	12
VF01139992	13	3	VF06209465	23	7	VF06564548	10	12	VF06582433	8	25
VF01141381	29	33	VF06210270	24	2	VF06564548	11	12	VF06582434	8	26
VF01141381	33	4	VF06210691	22	26	VF06565179	27	4	VF06582596	9	11
VF01141654	19	7	VF06210691	23	27	VF06565179	28	1	VF06584164	13	8
VF01141668	19	8	VF06212529	3	36	VF06565271.86	28	2	VF06586169	11	5
VF01142230	20	6	VF06214037	29	13	VF06565295	28	3	VF06586643	8	5
VF01142565	29	28	VF06214042	32	5	VF06565296.86	28	4	VF06589445	15	7
VF01142565	31	3	VF06214193	32	6	VF06571319	19	59	VF06589451	15	5
VF01142565	32	3	VF06214206	14	4	VF06579315	1	9	VF16500123	13	2
VF01157350	23	30	VF06214246	31	5	VF06580089	10	5	VF16500124	13	4

ANDEX 713 T EVO / Part No Index



Part No.	Page	Pos No	Part No.	Page	Pos No	Part No.	Page	Pos No	Part No.	Page	Pos No
VF16500125	13	11	VF16508685	7	24	VF16606478	26	12	VF16609375	22	3
VF16500126	13	12	VF16508686	4	54	VF16606478	28	6	VF16609375	23	3
VF16500127	13	13	VF16508686	6	54	VF16606585	31	9	VF16609408	23	24
VF16504060	8	4	VF16508687	4	53	VF16606585	32	10	VF16609428.86	24	1
VF16504063	8	11	VF16508687	5	53	VF16607120	3	46	VF16609448	19	21
VF16504063	12	11	VF16508687	6	53	VF16607137	21	8	VF16609452	21	7
VF16504064	8	21	VF16508687	7	53	VF16607410	19	57	VF16609458	19	58
VF16504064	12	21	VF16508688	4	51	VF16608181	31	10	VF16609477.94	21	12
VF16504073	8	27	VF16508688	6	51	VF16608181	32	11	VF16609479	20	20
VF16504075	4	55	VF16513608	10	6	VF16608182	31	11	VF16609481	23	21
VF16504075	5	54	VF16513608	11	6	VF16608182	32	12	VF16609482	31	12
VF16504075	6	55	VF16600345	29	6	VF16608480	3	41	VF16609482	32	14
VF16504075	7	54	VF16602584	29	11	VF16608481	3	22	VF16609622	19	60
VF16504075	8	53	VF16602585	29	21	VF16608482.94	3	3	VF16609628	9	13
VF16504076	8	51	VF16604277	3	20	VF16608483	3	21	VF16609628	11	1
VF16506111	10	8	VF16604641	19	53	VF16608484.94	3	5	VF16609629	8	54
VF16506111	11	8	VF16604726	19	17	VF16608485	3	14	VF16609650	15	4
VF16508095	26	9	VF16604727	19	18	VF16608486	3	32	VF16609752	23	10
VF16508681	4	5	VF16604728	19	19	VF16608975	1	5	VF16609753	3	48
VF16508681	6	5	VF16604729	19	20	VF16609031	27	3	VF16609770	21	3
VF16508681	7	5	VF16604729	19	24	VF16609031	28	7	VF16609876	6	1
VF16508682	4	11	VF16604729	19	24	VF16609081	32	13	VF16609876	7	1
VF16508682	6	11	VF16604765	29	16	VF16609239	16	2	VF16609993	19	22
VF16508682	7	13	VF16604951	3	10	VF16609270	9	1	VF16609996	14	7
VF16508683	4	30	VF16604951	21	6	VF16609271	8	1	VF16609999	14	8
VF16508683	5	30	VF16605852.86	27	5	VF16609272	12	1	VF16613283	29	14
VF16508683	6	30	VF16605856	27	2	VF16609312	14	6	VF16614906	19	54
VF16508683	7	30	VF16606146	10	16	VF16609320.94	20	1	VF16615171	19	23
VF16508684	4	21	VF16606396	30	5	VF16609360	23	2	VF16616545	22	9
VF16508684	6	21	VF16606401	26	10	VF16609371	1	1	VF16616545	23	9
VF16508685	4	24	VF16606401	30	4	VF16609371	2	1	VF16617533	19	24
VF16508685	5	24	VF16606477	26	11	VF16609373	22	12	VF16620370	19	25
VF16508685	6	24	VF16606477	28	5	VF16609374	22	15	VF16620666	29	27

ANDEX 713 T EVO / Part No Index



Part No.	Page	Pos No	Part No.	Page	Pos No	Part No.	Page	Pos No	Part No.	Page	Pos No
VF16620666	31	13	VF16621125	3	50	VF16624431	23	16	VF16625117	19	63
VF16620944	3	40	VF16621147	19	26	VF16624596.86	30	1	VF16625118	19	62
VF16620948	3	7	VF16621156.86	26	13	VF16624648.86	28	8	VF16625119	19	65
VF16620949	3	15	VF16621269	20	19	VF16624765	3	39	VF16625128	29	3
VF16620950	3	16	VF16621945	33	5	VF16624792.94	21	2	VF16640711	30	16
VF16620952	3	28	VF16622159.86	20	3	VF16624795.86	3	47	VF16641444	29	32
VF16620953	3	4	VF16622315	19	67	VF16624895	3	45	VF16641491	29	9
VF16620954	3	38	VF16622915	3	11	VF16624906	2	19	VF16641492	29	6
VF16620955	4	4	VF16622916	3	23	VF16624907	2	22	VF16641547	22	2
VF16620955	6	4	VF16622917	3	24	VF16624908	2	21	VF16641551	4	1
VF16620955	7	4	VF16622918	3	25	VF16624961.94	3	35	VF16641551	5	1
VF16620956	4	26	VF16622920	3	37	VF16624966	3	27	VF16641604	29	9
VF16620956	5	26	VF16622921	3	42	VF16624979	19	66	VF16641657	19	28
VF16620956	6	26	VF16622928	2	20	VF16624980	19	61	VF16641769	31	16
VF16620956	7	26	VF16622933	3	30	VF16624985	13	10	VF16641769	32	17
VF16620957	4	28	VF16622946	19	64	VF16624986	4	13	VF16641924	33	1
VF16620957	5	28	VF16623032	14	9	VF16624986	5	13	VF16641968.86	17	5
VF16620957	6	28	VF16623233	31	14	VF16624986	13	1	VF16641969.86	17	6
VF16620957	7	28	VF16623233	32	15	VF16624998	15	13	VF16641970	17	2
VF16620958	4	29	VF16623510	29	34	VF16625102	5	12	VF16641973	14	12
VF16620958	5	29	VF16623510	31	15	VF16625102	7	12	VF16641973	19	29
VF16620958	6	29	VF16623510	32	16	VF16625108	5	21	VF16641977.86	17	1
VF16620958	7	29	VF16623698	1	9	VF16625108	7	21	VF16641998	19	30
VF16620979	2	4	VF16624000.94	23	13	VF16625109	5	55	VF16642014.94	21	10
VF16620980	2	5	VF16624118	30	15	VF16625109	7	55	VF16642017.94	23	12
VF16620981	2	6	VF16624283.86	16	1	VF16625110	5	51	VF16642025.94	22	1
VF16620982	2	7	VF16624378.86	1	10	VF16625110	7	51	VF16642035	19	55
VF16620984	2	11	VF16624404.86	30	2	VF16625111	5	23	VF16642038	19	56
VF16620985	2	13	VF16624424	19	27	VF16625111	7	23	VF16642040.94	21	14
VF16620986	2	14	VF16624425	22	25	VF16625112	5	4	VF16642043.86	31	17
VF16620987	2	16	VF16624425	23	28	VF16625113	5	5	VF16642043.86	32	18
VF16620988	2	18	VF16624429	14	10	VF16625115	5	11	VF16642070	19	31
VF16621043	20	10	VF16624430	14	11	VF16625115	7	11	VF16642079.86	19	32



ANDEX 713 T EVO / Part No Index

Part No.	Page	Pos No	Part No.	Page	Pos No	Part No.	Page	Pos No
VF16642079.86	26	14	VF16643578.86	18	5	VGND9813V	4	25
VF16642088.86	26	15	VF16643634	19	37	VGND9813V	5	25
VF16642089.86	26	16	VF16643769	33	6	VGND9813V	6	25
VF16642100.86	31	18	VF16643770	33	6	VGND9813V	7	25
VF16642100.86	32	19	VF16643796	8	13	VGND9813V	13	15
VF16642143	19	33	VF16643796	10	1	VGND9813V	16	3
VF16642208.86	19	34	VF16644284	32	21	VGND9813V	20	35
VF16642234.86	31	19	VF16644354.94	3	1	VGND9813V	22	13
VF16642234.86	32	20	VF16652144	25	2	VGND9813V	23	22
VF16642289	19	35	VF16654365	25	3	VGPZ160V	18	8
VF16642290	19	36	VG61.05.04	4	27	VGTH100V	20	16
VF16642321.86	14	13	VG61.05.04	5	27	VGTH100V	30	6
VF16642333.94	21	1	VG61.05.04	6	27			
VF16642408.94	23	1	VG61.05.04	7	27			
VF16642417.94	22	18	VG61.05.04	8	24			
VF16642437.86	27	1	VG63.27.00	4	22			
VF16642439.86	27	6	VG63.27.00	6	22			
VF16642476	3	33	VG63.27.00	8	22			
VF16642624	19	52	VG63.27.00	9	22			
VF16642644	15	1	VG63.27.00	12	22			
VF16642807	29	2	VG82.36.03	8	55			
VF16642851	18	3	VG82.36.08	4	56			
VF16642866	18	4	VG82.36.08	5	56			
VF16642867	26	17	VG82.36.08	6	56			
VF16642886.86	26	18	VG82.36.08	7	56			
VF16642900.86	28	9	VGGZ124V	20	12			
VF16642902.86	28	10	VGGZ124V	22	17			
VF16642910.86	14	14	VGMT0063	26	8			
VF16642915	14	15	VGMT100V	26	6			
VF16642953.86	14	16	VGND3028V	26	3			
VF16643118	15	11	VGND3034V	1	7			
VF16643129	15	12	VGND3034V	19	11			
VF16643541	3	8	VGND92043V	19	4			



ANDEX 713 T EVO

5000 < Mach. ID <=

Kverneland Group Gottmadingen N.V.
Industriepark 312
D-78244 Gottmadingen
Germany
+49(0)7731-788-0
+49(0)7731-788-355

© Kverneland Group

All rights reserved. No parts of this book may be reproduced, stored in a database or retrieval system, or published in any form or in any way, electronically, mechanically, optically, by print, photo print, microfilm (including micro and macro fiche), or any other means, including all video and CD systems, without prior written permission from the publisher.

Print date: 2008-04-30

